

DATE: 29 April 2022
DESIGNER: Alex Naper
PROJECT No: SES 05322-1 Section 1 Rev A
PROJECT NAME: SHD Development Belcamp DCC - Gerard Gannon Properties



Section 1: Grids 2,3, & 6-15.

Residential areas designed in accordance with EN13201-2:2015 Category P4.

Link Road designed in accordance with EN13201-2:2015 Category P2.

Access road designed in accordance with EN13201-2:2015 Category P3.

Outdoor Lighting Report

PREPARED BY: Sabre Electrical Services Ltd.
Unit 11,
Bellview Industrial Estate,
Tolka Valley Road,
Dublin 11
Phone Number: 01 8110875
Contact: Graham Sheehan
eMail: graham@sabrelighting.ie

Layout Report

General Data

Dimensions in Metres Angles in Degrees

Calculation Grids

ID	Grid Name	X	Y	X' Length	Y' Length	X' Spacing	Y' Spacing
1	Grid 1	-891160.95	-984279.68	122.86	108.00	1.50	1.50
2	Grid 2	-891372.35	-984171.67	307.00	242.99	1.50	1.50
3	Grid 3	-891631.99	-984075.32	258.00	147.00	1.50	1.50
4	Grid 4	-891705.46	-984102.99	122.86	72.00	1.50	1.50
5	Grid 5	-891428.47	-984204.71	122.86	72.00	1.50	1.50
6	Grid 6	-891839.75	-984063.12	206.78	123.00	1.50	1.50
7	Grid 7	-891404.87	-983946.60	296.68	99.00	1.50	1.50
8	Grid 8	-891118.09	-984078.77	370.99	99.00	1.50	1.50
9	Grid 9	-890745.35	-984028.77	341.49	99.00	1.50	1.50
10	Grid 10	-891649.87	-984095.29	258.00	169.00	1.50	1.50
11	Grid 11	-891366.08	-984151.66	27.00	141.00	1.50	1.50
12	Grid 12	-891135.41	-984171.23	75.00	98.73	1.50	1.50
13	Grid 13	-891334.97	-984212.02	222.95	190.45	1.50	1.50
14	Grid 14	-891067.03	-984240.08	99.00	157.09	1.50	1.50
15	Grid 15	-891395.43	-984141.63	21.00	67.31	1.50	1.50

Luminaire



Luminaire A Data

Supplier	Urbis Schreder
Type	AXIA 2.1 5165 Integrated lenses Rear louvers 16 OSLO SQUARE
Lamp(s)	16 OSLO SQUARE GIANT@300mA WW 727 230V 00-36-648
LampFlux(klm)/Colour	2.27 WW 2700K/70
File Name	AXIA 2.1 5165 16 OSLO SQUARE GIANT 300mA WW 727 15.9W 434262 Integrated ...
Maintenance Factor	0.84
Imax70,80,90(cd/klm)	1250.5, 121.8, 2.3
No. in Project	51

Luminaire B Data

Supplier	
Type	2695 SNN-1C#
Lamp(s)	1 ST 250 33200 2000 E40
LampFlux(klm)/Colour	0.00 1950 / 23
File Name	Arc 2695 SNN 1C# 1 ST 250 33200 2000 E 40.ltd
Maintenance Factor	0.84
Imax70,80,90(cd/klm)	0.0, 0.0, 0.0
No. in Project	22



Luminaire C Data

Supplier	Urbis Schreder
Type	AXIA 3.3 5267 Integrated lenses 64 OSLO SQUARE GIANT@880mA
Lamp(s)	64 OSLO SQUARE GIANT@880mA WW 727 230V 00-25-842
LampFlux(klm)/Colour	21.88 WW 2700K/70
File Name	AXIA 3.3 5267 64 OSLO SQUARE GIANT 880mA WW 727 172W 429224 Integrated ...
Maintenance Factor	0.84
Imax70,80,90(cd/klm)	866.6, 137.9, 8.0
No. in Project	5



Luminaire D Data

Supplier	Urbis Schreder
Type	AXIA 3.3 5267 Integrated lenses 64 OSLO SQUARE GIANT@420mA
Lamp(s)	64 OSLO SQUARE GIANT@420mA WW 727 230V 00-36-649
LampFlux(klm)/Colour	12.26 WW 2700K/70
File Name	AXIA 3.3 5267 64 OSLO SQUARE GIANT 420mA WW 727 79W 429224 Integrated I...
Maintenance Factor	0.84
Imax70,80,90(cd/klm)	866.6, 137.9, 8.0
No. in Project	13

Luminaires

Luminaire E Data

Supplier	C U Phosco
Type	E950-28-R3P-727-C300-9W
Lamp(s)	727N
Lamp Flux (klm)	1.12
File Name	E950-28-R3P-727-C0300-9W.ies
Maintenance Factor	0.84
Imax70,80,90(cd/klm)	900.6, 60.7, 0.3
No. in Project	64

Luminaire F Data

Supplier	C U Phosco
Type	E951-64-P4-G-727-W5-0400-36W
Lamp(s)	727SS
Lamp Flux (klm)	5.14
File Name	E951-64-P4-G-727-W5-0400-36W.ies
Maintenance Factor	0.84
Imax70,80,90(cd/klm)	492.6, 81.8, 0.0
No. in Project	14

Luminaire G Data

Supplier	C U Phosco
Type	E950-28-P4A-727-C350-10W
Lamp(s)	727N
Lamp Flux (klm)	1.33
File Name	E950-28-P4A-727-C0350-10W.ies
Maintenance Factor	0.84
Imax70,80,90(cd/klm)	659.3, 183.1, 0.3
No. in Project	79

Luminaire H Data

Supplier	C U Phosco
Type	E950-28-A2A-727-C650-17W
Lamp(s)	727N
Lamp Flux (klm)	2.15
File Name	E950-28-A2A-727-C0650-17W.ies
Maintenance Factor	0.84
Imax70,80,90(cd/klm)	470.3, 22.7, 0.9
No. in Project	9

Luminaire K Data

Supplier	C U Phosco
Type	E950-28-R3P-727-C300-9W
Lamp(s)	727N
Lamp Flux (klm)	1.12
File Name	E950-28-R3P-727-C0300-9W.ies
Maintenance Factor	0.84
Imax70,80,90(cd/klm)	900.6, 60.7, 0.3
No. in Project	4

Luminaire O Data

Supplier	Urbis Schreder
Type	AXIA 2.1 5165 Integrated lenses Rear louvers 16 OSOLON SQUARE
Lamp(s)	16 OSOLON SQUARE GIANT@300mA WW 727 230V 00-36-648
LampFlux(klm)/Colour	2.27 WW 2700K/70
File Name	AXIA 2.1 5165 16 OSOLON SQUARE GIANT 300mA WW 727 15.9W 434262 Integrated ...
Maintenance Factor	0.84
Imax70,80,90(cd/klm)	1250.5, 121.8, 2.3
No. in Project	1



Layout

ID	Type	X	Y	Height	Angle	Tilt	Cant	Out-reach	Dimmed to	Target X	Target Y	Target Z
1	A	-891338.75	-983959.82	5.00	280.00	0.00	0.00	0.45	80%			
2	A	-891310.88	-983960.76	5.00	252.00	0.00	0.00	0.45	80%			
3	A	-891283.10	-983981.37	5.00	219.00	0.00	0.00	0.45	80%			
4	A	-891266.47	-984008.12	5.00	217.00	0.00	0.00	0.45	80%			
5	A	-891244.49	-984027.03	5.00	247.00	0.00	0.00	0.45	80%			
6	A	-891217.15	-984028.86	5.00	266.00	0.00	0.00	0.45	80%			
7	A	-891183.74	-984030.15	5.00	266.00	0.00	0.00	0.45	80%			
8	A	-891147.85	-984034.34	5.00	262.00	0.00	0.00	0.45	80%			
9	A	-891113.36	-984040.12	5.00	263.00	0.00	0.00	0.45	80%			
10	A	-891077.56	-984046.48	5.00	262.00	0.00	0.00	0.45	80%			
11	A	-891041.64	-984052.29	5.00	263.00	0.00	0.00	0.45	80%			
12	A	-891006.36	-984057.91	5.00	263.00	0.00	0.00	0.45	80%			
13	A	-890970.77	-984061.17	5.00	267.00	0.00	0.00	0.45	80%			
14	A	-890947.20	-984066.85	5.00	259.00	0.00	0.00	0.45	80%			
15	A	-890922.97	-984064.90	5.00	292.00	0.00	0.00	0.45	80%			
16	A	-890890.26	-984050.34	5.00	292.00	0.00	0.00	0.45	80%			
17	A	-890857.54	-984035.27	5.00	293.00	0.00	0.00	0.45	80%			
18	A	-890824.35	-984023.95	5.00	280.00	0.00	0.00	0.45	80%			
19	A	-890788.59	-984022.29	5.00	273.00	0.00	0.00	0.45	80%			
20	A	-890754.34	-984016.24	5.00	279.00	0.00	0.00	0.45	80%			
21	A	-890728.87	-984009.19	5.00	279.00	0.00	0.00	0.45	80%			
22	A	-890693.50	-984007.50	5.00	268.00	0.00	0.00	0.45	80%			
23	A	-890657.73	-984011.04	5.00	261.00	0.00	0.00	0.45	80%			
24	A	-890622.61	-984016.69	5.00	263.00	0.00	0.00	0.45	80%			
25	A	-890589.81	-984021.48	5.00	266.00	0.00	0.00	0.45	80%			
26	A	-890564.23	-984022.07	5.00	280.00	0.00	0.00	0.45	80%			
27	A	-890529.03	-984012.38	5.00	294.00	0.00	0.00	0.45	80%			
28	A	-890499.38	-983993.22	5.00	305.00	0.00	0.00	0.45	80%			
29	A	-890467.18	-983979.36	5.00	294.00	0.00	0.00	0.45	80%			
30	A	-890446.51	-983966.66	5.00	294.00	0.00	0.00	0.45	80%			
31	A	-890413.37	-983962.39	5.00	263.00	0.00	0.00	0.45	80%			
32	A	-891385.67	-983975.12	5.00	291.00	0.00	0.00	0.45	80%			
33	A	-891418.05	-983986.59	5.00	283.00	0.00	0.00	0.45	80%			
34	A	-891450.49	-983985.02	5.00	265.00	0.00	0.00	0.45	80%			
35	A	-891486.96	-983983.75	5.00	277.00	0.00	0.00	0.45	80%			
36	A	-891522.31	-983984.47	5.00	270.00	0.00	0.00	0.45	80%			

Layout Continued

ID	Type	X	Y	Height	Angle	Tilt	Cant	Out-reach	Dimmed to	Target X	Target Y	Target Z
37	A	-891556.66	-983981.50	5.00	261.00	0.00	0.00	0.45	80%			
38	A	-891584.84	-983977.33	5.00	272.00	0.00	0.00	0.45	80%			
39	A	-891620.29	-983981.41	5.00	281.00	0.00	0.00	0.45	80%			
40	A	-891652.31	-983985.16	5.00	263.00	0.00	0.00	0.45	80%			
41	A	-891683.95	-983978.35	5.00	261.00	0.00	0.00	0.45	80%			
42	A	-891720.66	-983974.81	5.00	264.00	0.00	0.00	0.45	80%			
43	A	-891752.65	-983966.56	5.00	251.00	0.00	0.00	0.45	80%			
44	A	-891789.08	-983956.23	5.00	262.00	0.00	0.00	0.45	80%			
45	A	-891812.55	-983952.68	5.00	337.00	0.00	0.00	0.45	80%			
46	B	-891059.81	-984235.45	12.00	82.00	5.00	0.00	2.50	100%			
47	B	-891023.47	-984241.03	12.00	83.00	5.00	0.00	2.50	100%			
48	B	-890986.40	-984246.81	12.00	83.00	5.00	0.00	2.50	100%			
49	B	-890949.33	-984252.80	12.00	83.00	5.00	0.00	2.50	100%			
50	B	-891201.98	-984189.30	12.00	264.00	5.00	0.00	2.50	100%			
51	B	-891240.77	-984181.46	12.00	261.00	5.00	0.00	2.50	100%			
52	B	-891278.98	-984173.19	12.00	261.00	5.00	0.00	2.50	100%			
53	B	-891318.14	-984163.97	12.00	261.00	5.00	0.00	2.50	100%			
54	B	-891395.41	-984143.76	12.00	261.00	5.00	0.00	2.50	100%			
55	B	-891433.42	-984132.98	12.00	261.00	5.00	0.00	2.50	100%			
56	B	-891349.66	-984156.02	12.00	258.00	5.00	0.00	2.50	100%			
57	B	-891471.44	-984121.17	12.00	252.00	5.00	0.00	2.50	100%			
58	B	-891509.74	-984109.02	12.00	252.00	5.00	0.00	2.50	100%			
59	B	-891586.59	-984082.26	12.00	260.00	5.00	0.00	2.50	100%			
60	B	-891627.48	-984070.16	12.00	244.00	5.00	0.00	2.50	100%			
61	B	-891663.60	-984057.73	12.00	251.00	5.00	0.00	2.50	100%			
62	B	-891697.56	-984045.67	12.00	252.00	5.00	0.00	2.50	100%			
63	B	-891736.03	-984032.41	12.00	252.00	5.00	0.00	2.50	100%			
64	B	-891773.84	-984019.14	12.00	252.00	5.00	0.00	2.50	100%			
65	B	-891812.09	-984007.87	12.00	252.00	5.00	0.00	2.50	100%			
66	B	-891162.40	-984194.65	12.00	259.00	5.00	0.00	2.50	100%			
67	C	-891123.66	-984229.92	12.00	82.00	5.00	0.00	0.50	100%			
68	C	-891121.02	-984200.15	12.00	262.00	0.00	0.00	0.50	100%			
69	C	-891064.53	-984207.38	12.00	267.00	0.00	0.00	0.50	100%			
70	C	-891084.10	-984234.94	10.00	182.00	0.00	0.00	0.50	100%			
71	D	-891110.30	-984182.24	10.00	3.00	0.00	0.00	0.50	100%			
72	D	-891088.19	-984186.14	10.00	177.00	0.00	0.00	0.50	100%			

Layout Continued

ID	Type	X	Y	Height	Angle	Tilt	Cant	Out-reach	Dimmed to	Target X	Target Y	Target Z
73	D	-891142.36	-984109.45	10.00	238.00	0.00	0.00	0.50	100%			
74	D	-891169.82	-984108.68	10.00	67.00	0.00	0.00	0.50	100%			
75	C	-891115.12	-984231.52	10.00	350.00	0.00	0.00	0.50	100%			
76	D	-891194.41	-984082.44	10.00	242.00	0.00	0.00	0.50	100%			
77	D	-891230.10	-984077.04	10.00	58.00	0.00	0.00	0.50	100%			
78	D	-891267.20	-984043.39	10.00	242.00	0.00	0.00	0.50	100%			
79	D	-891317.38	-984030.58	10.00	63.00	0.00	0.00	0.50	100%			
80	D	-891328.09	-984006.40	10.00	221.00	0.00	0.00	0.50	100%			
81	D	-891354.19	-983969.02	10.00	192.00	0.00	0.00	0.50	100%			
82	D	-891349.28	-984005.66	10.00	40.00	0.00	0.00	0.50	100%			
83	G	-891308.02	-984112.89	5.00	6.00	0.00	0.00	0.40	100%			
84	E	-891369.25	-983941.13	5.00	1.00	0.00	0.00	0.50	100%			
85	E	-891358.39	-983941.72	5.00	172.00	0.00	0.00	0.50	100%			
86	K	-891368.13	-983920.44	5.00	1.00	0.00	0.00	0.50	100%			
87	K	-891358.35	-983921.02	5.00	176.00	0.00	0.00	0.50	100%			
88	K	-891358.25	-983921.12	5.00	1.00	0.00	0.00	0.50	100%			
89	E	-891358.35	-983941.67	5.00	1.00	0.00	0.00	0.50	100%			
90	E	-891369.73	-983941.18	5.00	178.00	0.00	0.00	0.50	100%			
91	K	-891368.28	-983920.54	5.00	180.00	0.00	0.00	0.50	100%			
92	D	-891120.18	-984138.29	10.00	42.00	0.00	0.00	0.50	100%			
93	D	-891090.76	-984153.08	10.00	193.00	0.00	0.00	0.50	100%			
94	F	-891348.96	-984134.75	8.00	163.00	0.00	0.00	0.50	100%			
95	F	-891347.22	-984100.64	8.00	182.00	0.00	0.00	0.50	100%			
96	F	-891351.46	-984064.98	8.00	183.00	0.00	0.00	0.50	100%			
97	A	-891606.10	-983989.60	5.00	351.00	0.00	0.00	0.50	100%			
98	F	-891352.58	-984033.74	8.00	154.00	0.00	0.00	0.50	100%			
99	F	-891620.23	-984053.64	8.00	341.00	0.00	0.00	0.50	100%			
100	F	-891607.96	-984016.26	8.00	329.00	0.00	0.00	0.50	100%			
101	F	-891581.62	-983996.53	8.00	108.00	0.00	0.00	0.50	100%			
102	F	-891550.60	-983998.40	8.00	90.00	0.00	0.00	0.50	100%			
103	F	-891517.27	-984001.08	8.00	86.00	0.00	0.00	0.50	100%			
104	F	-891484.41	-984003.83	8.00	84.00	0.00	0.00	0.50	100%			
105	F	-891449.78	-984005.84	8.00	90.00	0.00	0.00	0.50	100%			
106	F	-891415.11	-984001.83	8.00	95.00	0.00	0.00	0.50	100%			
107	F	-891382.26	-983992.76	8.00	107.00	0.00	0.00	0.50	100%			
108	F	-891597.21	-984031.60	8.00	161.00	0.00	0.00	0.50	100%			

Layout Continued

ID	Type	X	Y	Height	Angle	Tilt	Cant	Out-reach	Dimmed to	Target X	Target Y	Target Z
109	G	-891104.08	-984059.13	5.00	2.00	0.00	0.00	0.50	100%			
110	G	-891080.05	-984066.49	5.00	285.00	0.00	0.00	0.50	100%			
111	G	-891080.10	-984081.52	5.00	131.00	0.00	0.00	0.50	100%			
112	G	-891109.65	-984082.55	5.00	147.00	0.00	0.00	0.50	100%			
113	G	-891096.51	-984083.17	5.00	175.00	0.00	0.00	0.50	100%			
114	G	-891095.88	-984104.77	5.00	176.00	0.00	0.00	0.50	100%			
115	G	-891121.39	-984099.53	5.00	143.00	0.00	0.00	0.50	100%			
116	G	-891093.75	-984126.28	5.00	182.00	0.00	0.00	0.50	100%			
117	B	-891545.94	-984096.01	12.00	260.00	5.00	0.00	2.50	100%			
118	E	-891368.35	-984008.82	5.00	10.00	0.00	0.00	0.40	100%			
119	G	-891383.85	-984010.97	5.00	70.00	0.00	0.00	0.40	100%			
120	E	-891435.63	-984015.42	5.00	95.00	0.00	0.00	0.40	100%			
121	E	-891467.31	-984017.21	5.00	100.00	0.00	0.00	0.40	100%			
122	E	-891502.87	-984022.04	5.00	186.00	0.00	0.00	0.40	100%			
123	E	-891493.17	-984013.62	5.00	96.00	0.00	0.00	0.40	100%			
124	E	-891499.60	-984049.46	5.00	186.00	0.00	0.00	0.40	100%			
125	E	-891503.08	-984066.70	5.00	193.00	0.00	0.00	0.40	100%			
126	G	-891485.34	-984103.35	5.00	252.00	0.00	0.00	0.40	100%			
127	E	-891561.63	-984073.33	5.00	254.00	0.00	0.00	0.40	100%			
128	G	-891449.09	-984103.83	5.00	274.00	0.00	0.00	0.40	100%			
129	G	-891489.96	-984093.91	5.00	275.00	0.00	0.00	0.40	100%			
130	E	-891416.67	-984110.93	5.00	277.00	0.00	0.00	0.40	100%			
131	E	-891420.86	-984102.93	5.00	277.00	0.00	0.00	0.40	100%			
132	E	-891538.73	-984067.10	5.00	339.00	0.00	0.00	0.40	100%			
133	E	-891558.95	-984048.53	5.00	67.00	0.00	0.00	0.40	100%			
134	E	-891568.34	-984036.93	5.00	342.00	0.00	0.00	0.40	100%			
135	E	-891533.71	-984019.97	5.00	339.00	0.00	0.00	0.40	100%			
136	E	-891543.72	-984010.27	5.00	72.00	0.00	0.00	0.40	100%			
137	E	-891571.88	-984008.12	5.00	69.00	0.00	0.00	0.40	100%			
138	E	-891590.34	-984064.56	5.00	250.00	0.00	0.00	0.40	100%			
139	E	-891537.64	-984054.72	5.00	77.00	0.00	0.00	0.40	100%			
140	G	-891530.80	-984080.54	5.00	255.00	0.00	0.00	0.40	100%			
141	G	-891515.15	-984095.98	5.00	253.00	0.00	0.00	0.40	100%			
142	G	-891467.45	-984103.10	5.00	187.00	0.00	0.00	0.40	100%			
143	G	-891391.84	-984036.17	5.00	4.00	0.00	0.00	0.40	100%			
144	G	-891405.59	-984016.93	5.00	126.00	0.00	0.00	0.40	100%			

Layout Continued

ID	Type	X	Y	Height	Angle	Tilt	Cant	Out-reach	Dimmed to	Target X	Target Y	Target Z
145	G	-891405.25	-984017.57	5.00	297.00	0.00	0.00	0.40	100%			
146	E	-891418.79	-984014.19	5.00	9.00	0.00	0.00	0.40	100%			
147	G	-891383.98	-984011.22	5.00	238.00	0.00	0.00	0.40	100%			
148	E	-891338.22	-984079.21	5.00	188.00	0.00	0.00	0.40	100%			
149	E	-891328.92	-984097.28	5.00	178.00	0.00	0.00	0.40	100%			
150	E	-891330.25	-984125.52	5.00	185.00	0.00	0.00	0.40	100%			
151	H	-891308.13	-984056.10	5.00	179.00	0.00	0.00	0.40	100%			
152	H	-891298.00	-984060.39	5.00	178.00	0.00	0.00	0.40	100%			
153	H	-891278.40	-984066.64	5.00	106.00	0.00	0.00	0.40	100%			
154	H	-891259.64	-984068.16	5.00	159.00	0.00	0.00	0.40	100%			
155	E	-891331.06	-984031.24	5.00	25.00	0.00	0.00	0.40	100%			
156	G	-891209.61	-984101.91	5.00	178.00	0.00	0.00	0.40	100%			
157	G	-891206.63	-984130.52	5.00	190.00	0.00	0.00	0.40	100%			
158	E	-891129.03	-984139.44	5.00	2.00	0.00	0.00	0.40	100%			
159	H	-891175.34	-984114.36	5.00	155.00	0.00	0.00	0.40	100%			
160	E	-891120.21	-984167.21	5.00	8.00	0.00	0.00	0.40	100%			
161	G	-891200.20	-984156.07	5.00	192.00	0.00	0.00	0.40	100%			
162	G	-891222.27	-984164.52	5.00	254.00	0.00	0.00	0.40	100%			
163	G	-891246.31	-984162.80	5.00	274.00	0.00	0.00	0.40	100%			
164	G	-891269.52	-984158.46	5.00	274.00	0.00	0.00	0.40	100%			
165	G	-891178.06	-984182.73	5.00	263.00	0.00	0.00	0.40	100%			
166	G	-891198.43	-984170.05	5.00	270.00	0.00	0.00	0.40	100%			
167	G	-891148.43	-984184.13	5.00	272.00	0.00	0.00	0.40	100%			
168	G	-891199.87	-984178.00	5.00	248.00	0.00	0.00	0.40	100%			
169	G	-891126.00	-984190.20	5.00	266.00	0.00	0.00	0.40	100%			
170	G	-891286.22	-984163.53	5.00	258.00	0.00	0.00	0.40	100%			
171	G	-891313.69	-984158.58	5.00	256.00	0.00	0.00	0.40	100%			
172	G	-891252.94	-984170.63	5.00	258.00	0.00	0.00	0.40	100%			
173	G	-891224.65	-984177.55	5.00	252.00	0.00	0.00	0.40	100%			
174	G	-891343.66	-984151.90	5.00	254.00	0.00	0.00	0.40	100%			
175	G	-891369.49	-984144.33	5.00	243.00	0.00	0.00	0.40	100%			
176	G	-891398.42	-984136.62	5.00	247.00	0.00	0.00	0.40	100%			
177	G	-891426.62	-984127.02	5.00	243.00	0.00	0.00	0.40	100%			
178	G	-891454.61	-984115.31	5.00	243.00	0.00	0.00	0.40	100%			
179	G	-891543.02	-984089.19	5.00	259.00	0.00	0.00	0.40	100%			
180	G	-891574.97	-984080.06	5.00	243.00	0.00	0.00	0.40	100%			

Layout Continued

ID	Type	X	Y	Height	Angle	Tilt	Cant	Out-reach	Dimmed to	Target X	Target Y	Target Z
181	E	-891499.78	-984090.73	5.00	187.00	0.00	0.00	0.40	100%			
182	E	-891439.52	-984113.68	5.00	277.00	0.00	0.00	0.40	100%			
183	E	-891323.03	-984140.01	5.00	274.00	0.00	0.00	0.40	100%			
184	G	-891311.63	-984149.74	5.00	184.00	0.00	0.00	0.40	100%			
185	E	-891328.36	-984152.97	5.00	267.00	0.00	0.00	0.40	100%			
186	E	-891067.97	-984088.70	5.00	171.00	0.00	0.00	0.40	100%			
187	E	-891083.48	-984111.05	5.00	111.00	0.00	0.00	0.40	100%			
188	E	-891078.13	-984119.07	5.00	176.00	0.00	0.00	0.40	100%			
189	G	-891087.72	-984131.86	5.00	261.00	0.00	0.00	0.40	100%			
190	G	-891052.05	-984070.34	5.00	77.00	0.00	0.00	0.40	100%			
191	G	-891020.54	-984074.63	5.00	81.00	0.00	0.00	0.40	100%			
192	G	-890991.61	-984078.97	5.00	81.00	0.00	0.00	0.40	100%			
193	E	-890982.21	-984095.19	5.00	345.00	0.00	0.00	0.40	100%			
194	E	-890985.51	-984120.60	5.00	352.00	0.00	0.00	0.40	100%			
195	E	-890989.10	-984148.65	5.00	352.00	0.00	0.00	0.40	100%			
196	E	-890986.81	-984170.34	5.00	352.00	0.00	0.00	0.40	100%			
197	E	-890990.98	-984198.63	5.00	352.00	0.00	0.00	0.40	100%			
198	G	-890975.51	-984219.36	5.00	245.00	0.00	0.00	0.40	100%			
199	H	-891004.61	-984209.07	5.00	253.00	0.00	0.00	0.40	100%			
200	H	-891031.25	-984202.47	5.00	256.00	0.00	0.00	0.40	100%			
201	H	-891052.18	-984198.14	5.00	266.00	0.00	0.00	0.40	100%			
202	H	-891076.65	-984196.14	5.00	262.00	0.00	0.00	0.40	100%			
203	O	-891789.02	-983921.43	5.00	311.00	0.00	0.00	0.45	80%			
204	A	-891808.18	-983972.89	5.00	62.00	0.00	0.00	0.45	80%			
205	A	-891786.62	-983984.53	5.00	63.00	0.00	0.00	0.45	80%			
206	A	-891786.49	-983990.03	5.00	266.00	0.00	0.00	0.45	80%			
207	A	-891813.09	-983987.21	5.00	262.00	0.00	0.00	0.45	80%			
208	A	-891827.17	-983993.32	5.00	340.00	0.00	0.00	0.45	80%			
209	E	-891104.25	-984121.26	5.00	111.00	0.00	0.00	0.40	100%			
210	G	-891288.35	-984118.78	5.00	276.00	0.00	0.00	0.40	100%			
211	G	-891265.36	-984115.12	5.00	215.00	0.00	0.00	0.40	100%			
212	G	-891288.35	-984101.39	5.00	277.00	0.00	0.00	0.40	100%			
213	G	-891258.53	-984110.74	5.00	193.00	0.00	0.00	0.40	100%			
214	G	-891272.71	-984088.88	5.00	276.00	0.00	0.00	0.40	100%			
215	G	-891295.27	-984088.99	5.00	278.00	0.00	0.00	0.40	100%			
216	G	-891270.45	-984100.94	5.00	283.00	0.00	0.00	0.40	100%			

Layout Continued

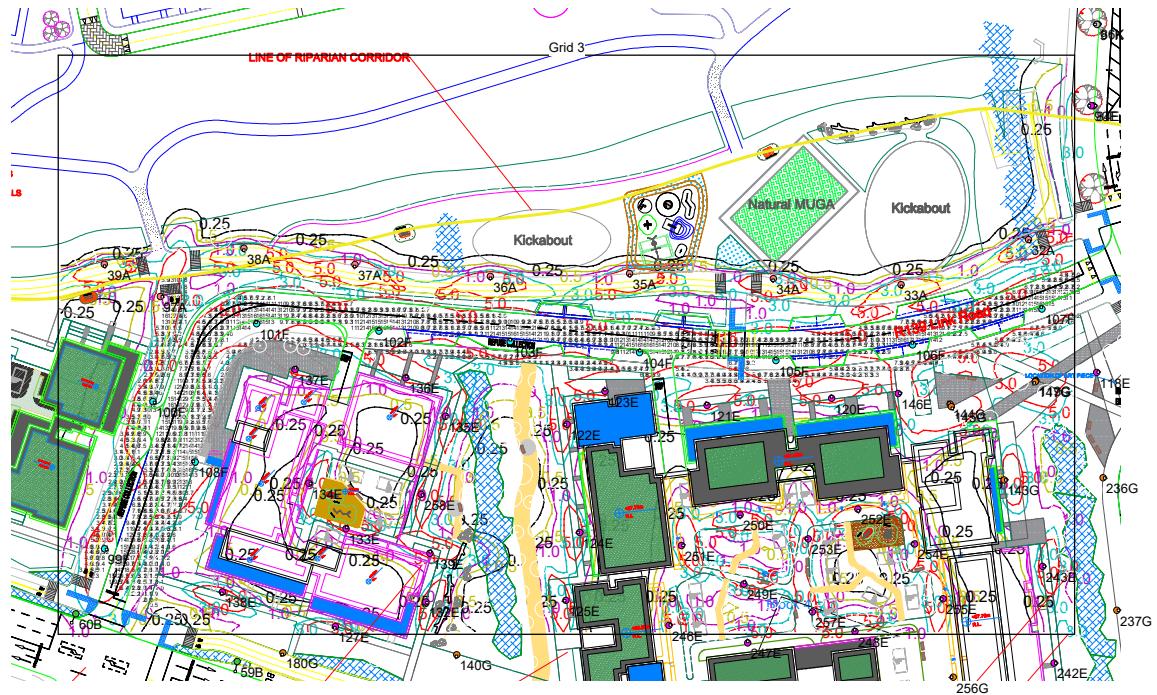
ID	Type	X	Y	Height	Angle	Tilt	Cant	Out-reach	Dimmed to	Target X	Target Y	Target Z
217	G	-891158.15	-984142.11	5.00	6.00	0.00	0.00	0.40	100%			
218	G	-891153.40	-984163.49	5.00	2.00	0.00	0.00	0.40	100%			
219	G	-891163.37	-984156.60	5.00	91.00	0.00	0.00	0.40	100%			
220	G	-891170.50	-984171.48	5.00	186.00	0.00	0.00	0.40	100%			
221	G	-891174.85	-984135.07	5.00	188.00	0.00	0.00	0.40	100%			
222	G	-891168.52	-984142.90	5.00	90.00	0.00	0.00	0.40	100%			
223	G	-891054.47	-984121.26	5.00	351.00	0.00	0.00	0.40	100%			
224	G	-891057.41	-984136.38	5.00	260.00	0.00	0.00	0.40	100%			
225	G	-891046.32	-984097.51	5.00	348.00	0.00	0.00	0.40	100%			
226	G	-891026.50	-984102.91	5.00	257.00	0.00	0.00	0.40	100%			
227	G	-890998.24	-984105.66	5.00	255.00	0.00	0.00	0.40	100%			
228	G	-891012.66	-984117.73	5.00	162.00	0.00	0.00	0.40	100%			
229	G	-891032.98	-984120.18	5.00	249.00	0.00	0.00	0.40	100%			
230	G	-891013.94	-984145.80	5.00	168.00	0.00	0.00	0.40	100%			
231	G	-891010.53	-984170.08	5.00	176.00	0.00	0.00	0.40	100%			
232	G	-891029.54	-984168.86	5.00	82.00	0.00	0.00	0.40	100%			
233	G	-891055.35	-984166.19	5.00	349.00	0.00	0.00	0.40	100%			
234	G	-891037.38	-984141.55	5.00	133.00	0.00	0.00	0.40	100%			
235	G	-891022.59	-984158.02	5.00	310.00	0.00	0.00	0.40	100%			
236	G	-891366.76	-984035.58	5.00	351.00	0.00	0.00	0.40	100%			
237	G	-891363.29	-984069.22	5.00	4.00	0.00	0.00	0.40	100%			
238	G	-891360.22	-984129.32	5.00	346.00	0.00	0.00	0.40	100%			
239	G	-891359.25	-984102.67	5.00	9.00	0.00	0.00	0.40	100%			
240	E	-891382.89	-984103.42	5.00	0.00	0.00	0.00	0.40	100%			
241	E	-891379.80	-984130.36	5.00	2.00	0.00	0.00	0.40	100%			
242	E	-891379.20	-984082.66	5.00	0.00	0.00	0.00	0.40	100%			
243	E	-891382.14	-984058.09	5.00	0.00	0.00	0.00	0.40	100%			
244	E	-891391.64	-984125.67	5.00	279.00	0.00	0.00	0.40	100%			
245	E	-891403.74	-984121.47	5.00	280.00	0.00	0.00	0.40	100%			
246	E	-891476.98	-984073.04	5.00	9.00	0.00	0.00	0.40	100%			
247	E	-891456.93	-984077.53	5.00	97.00	0.00	0.00	0.40	100%			
248	E	-891429.75	-984074.61	5.00	97.00	0.00	0.00	0.40	100%			
249	E	-891457.90	-984062.53	5.00	75.00	0.00	0.00	0.40	100%			
250	E	-891458.87	-984045.00	5.00	267.00	0.00	0.00	0.40	100%			
251	E	-891473.78	-984052.79	5.00	14.00	0.00	0.00	0.40	100%			
252	E	-891428.97	-984043.54	5.00	279.00	0.00	0.00	0.40	100%			

Layout Continued

ID	Type	X	Y	Height	Angle	Tilt	Cant	Out-reach	Dimmed to	Target X	Target Y	Target Z
253	E	-891441.62	-984051.07	5.00	178.00	0.00	0.00	0.40	100%			
254	E	-891414.66	-984052.40	5.00	186.00	0.00	0.00	0.40	100%			
255	E	-891407.35	-984066.33	5.00	186.00	0.00	0.00	0.40	100%			
256	G	-891404.82	-984086.20	5.00	186.00	0.00	0.00	0.40	100%			
257	E	-891440.52	-984069.61	5.00	178.00	0.00	0.00	0.40	100%			
258	E	-891539.86	-984039.81	5.00	341.00	0.00	0.00	0.40	100%			
259	E	-891234.36	-984152.93	5.00	6.00	0.00	0.00	0.40	100%			
260	E	-891237.67	-984127.08	5.00	6.00	0.00	0.00	0.40	100%			
261	E	-891236.56	-984084.82	5.00	6.00	0.00	0.00	0.40	100%			
262	E	-891233.26	-984113.85	5.00	6.00	0.00	0.00	0.40	100%			

Horizontal Illuminance (lux)

Grid 3

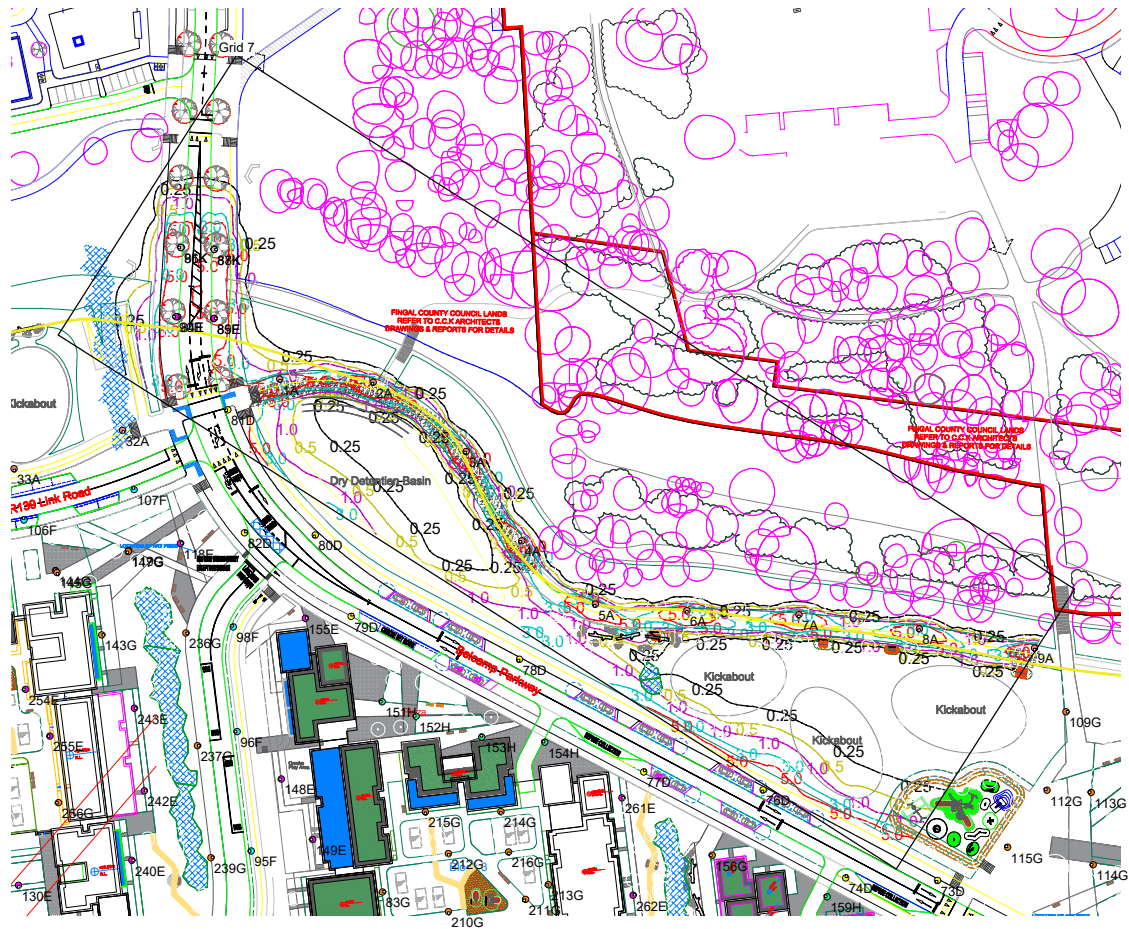


Results

Eav	7.62
Emin	0.48
Emax	18.38
Emin/Emax	0.03
Emin/Eav	0.06

Horizontal Illuminance (lux)

Grid 7

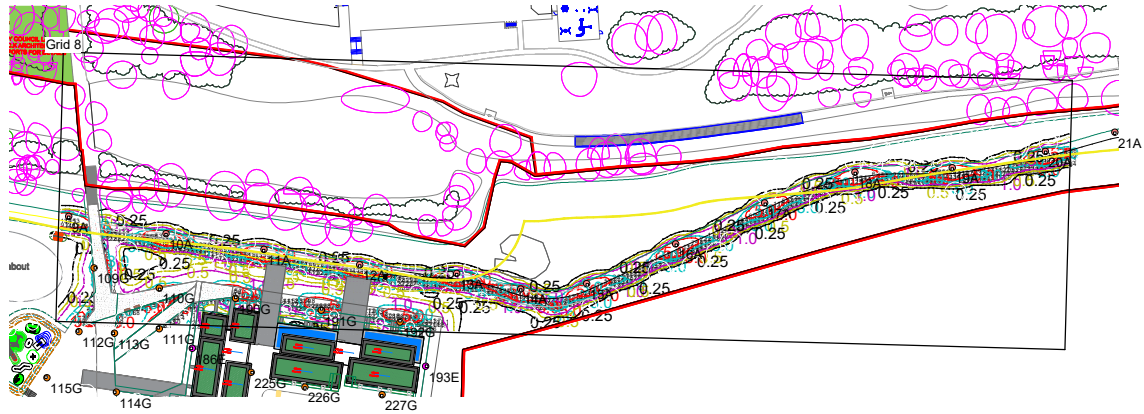


Results

Eav	5.96
Emin	1.15
Emax	16.38
Emin/Emax	0.07
Emin/Eav	0.19

Horizontal Illuminance (lux)

Grid 8

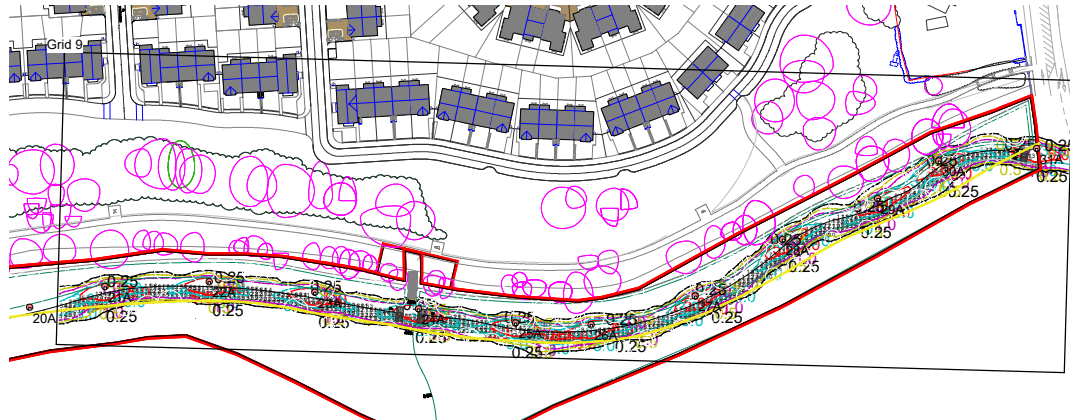


Results

Eav	4.96
Emin	1.00
Emax	15.73
Emin/Emax	0.06
Emin/Eav	0.20

Horizontal Illuminance (lux)

Grid 9

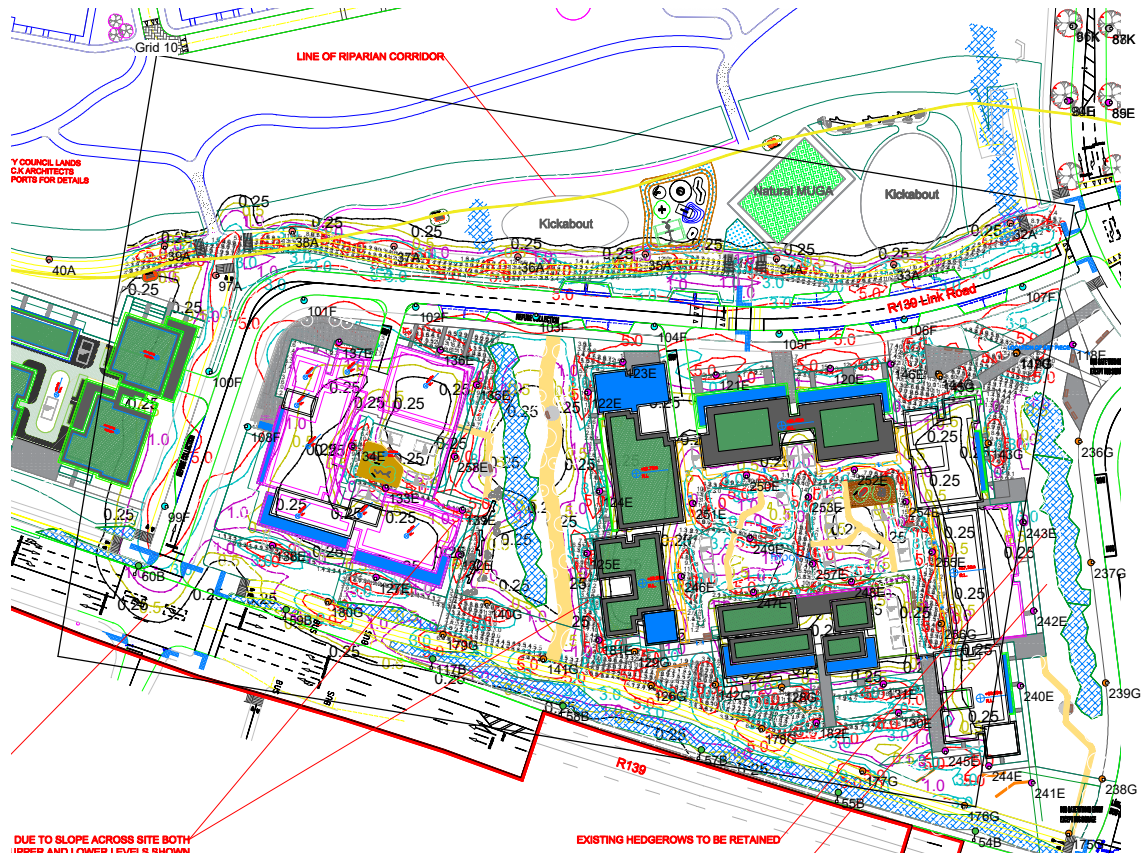


Results

Eav	5.05
Emin	1.01
Emax	15.87
Emin/Emax	0.06
Emin/Eav	0.20

Horizontal Illuminance (lux)

Grid 10

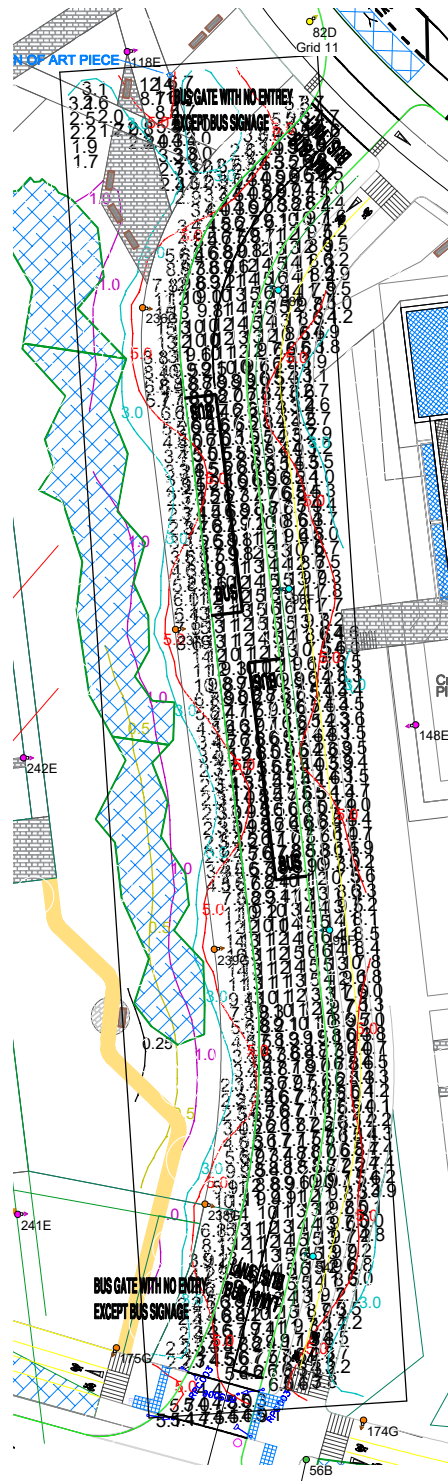


Results

Eav	5.81
Emin	1.09
Emax	17.62
Emin/Emax	0.06
Emin/Eav	0.19

Horizontal Illuminance (lux)

Grid 11

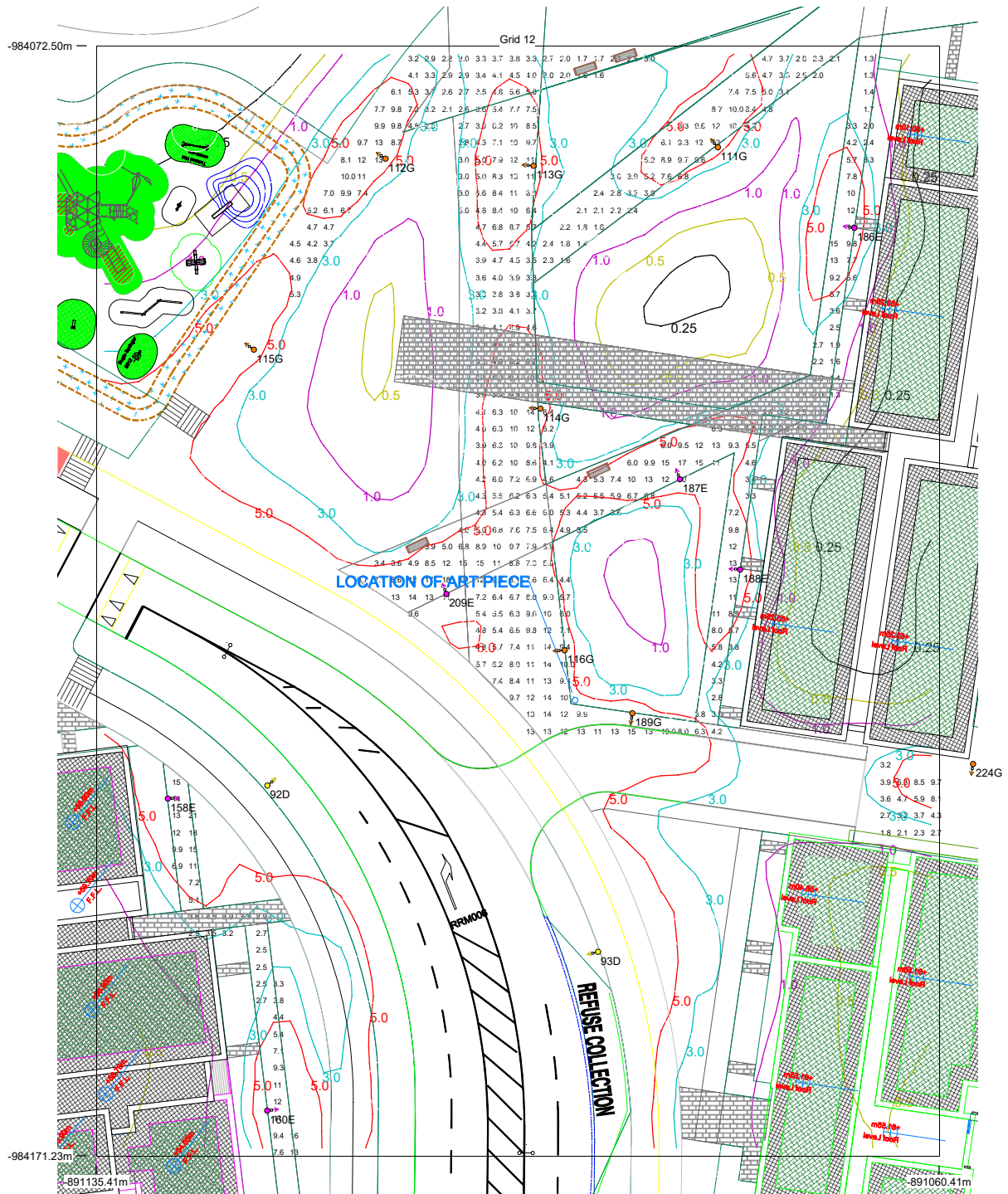


Results

Eav	7.81
Emin	1.66
Emax	16.20
Emin/Emax	0.10
Emin/Eav	0.21

Horizontal Illuminance (lux)

Grid 12



Results

Eav	6.61
Emin	1.30
Emax	20.91
Emin/Emax	0.06
Emin/Eav	0.20

Horizontal Illuminance (lux)

Grid 13



Results

Eav	5.88
Emin	1.16
Emax	21.97
Emin/Emax	0.05
Emin/Eav	0.20

Horizontal Illuminance (lux)

Grid 14

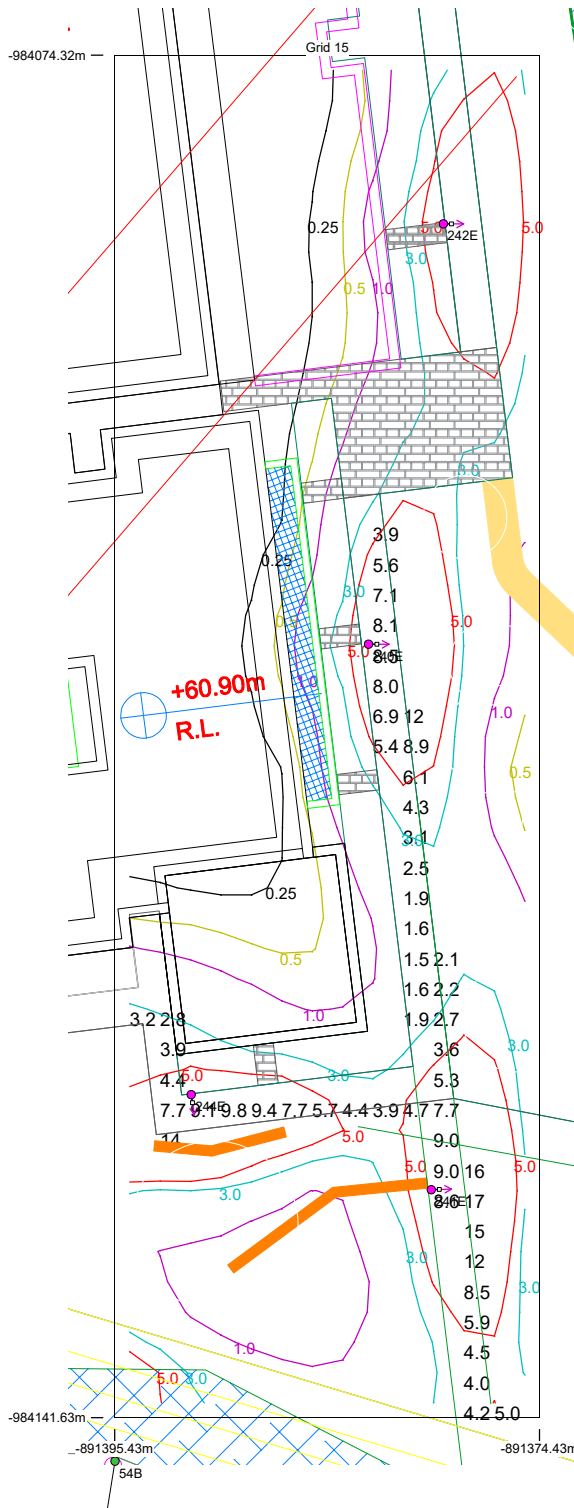


Results

Eav	5.12
Emin	1.05
Emax	16.50
Emin/Emax	0.06
Emin/Eav	0.21

Horizontal Illuminance (lux)

Grid 15



Results

Eav	6.40
Emin	1.51
Emax	16.52
Emin/Emax	0.09
Emin/Eav	0.24