



GROUND FLOOR PLAN
IN CONTEXT

SEE THE BIG SPACE LANDSCAPE ARCHITECTS DRAWINGS FOR DETAIL
OF LANDSCAPE TREATMENT



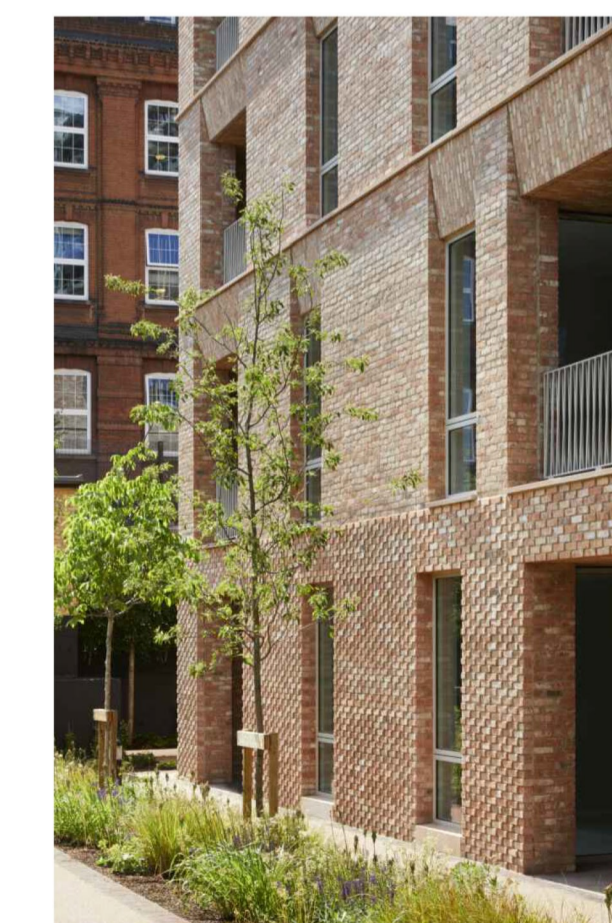
SOUTH ELEVATION
FACING ONTO OPEN SPACE TO THE SOUTH



KEY PLAN
INDICATING LOCATION OF BLOCK G
NOT TO SCALE

Breakdown of Units		
Apartment type	No.	% by beds
1 bed/ studio	0	0.00%
1 bed	29	44.62%
2 bed/ 3person	0	0.00%
2 bed/ 4 person	36	55.38%
3 bed/ 5 person	0	0.00%
Total	65	100.00%

Dual Aspect Ratio:	51%
Gross Internal Floor Area:	8299
Covered under-podium Area:	1314.2
Net Commercial Area:	140



PRECEDENT IMAGES

- TOP LEFT: ELY COURT, ALISON BROOKS ARCHITECTS
SET BACK BALCONIES AND SIMPLE FORMS
- TOP RIGHT: THE GABLES, DK-ARCHITECTS
SCULPTED FORM AT ENTRANCES TO BLOCKS
- BOTTOM LEFT: RETIREMENT HOME, MORRIS & CO ARCHITECTS
RUSTICATED BRICK BASE
- BOTTOM RIGHT: BRENTFORD LOCK, MIKHAIL RICHES
RECESSED BALCONIES AND METAL BALUSTRADES TO TERRACES

- © This drawing is copyright.
- 1 Do not scale this drawing.
- 2 Errors and omissions to be immediately notified to Architect.
- 3 All dimensions to be checked on site.
- 4 To be read with relevant Engineers drawings.

Notes:
All dimensions in millimetres

External Finishes:
Roof:
Selected flat roof with parapets to walls.
Sedum green roof as indicated.

Walls:
Selected facing brick with metal cappings.

Windows:
Window system framed in aluminium,
uPVC or similar

Gutters/downpipes:
Internal outlets

Balconies:
Powder coated metal railing or similar as
indicated;

Doors:
Powder coated aluminium or similar door
with fanlight and/or sidelight and/or glazed
light in leaf

Shopfronts:
Glazed with powdercoated metal frames



revisions	date	ins
description	2008 PA1 G 01	drawn no.
Block G		rev'n.
Ground Floor Plan		scale
South Elevation		1:200 A1
job		date
SHD DEVELOPMENT,		APR' 22
BELCAMP,		drawn
MALAHIDE ROAD,		KM
DUBLIN 17.		checked
client		COS

Gerard Gannon Properties

SHD PLANNING APPLICATION

CONROY CROWE KELLY
ARCHITECTS & URBAN DESIGNERS

65 MERRION SQUARE
DUBLIN 2

phone 01 6613990 fax 01 6765715
email info@cck.ie