



# BELCAMP

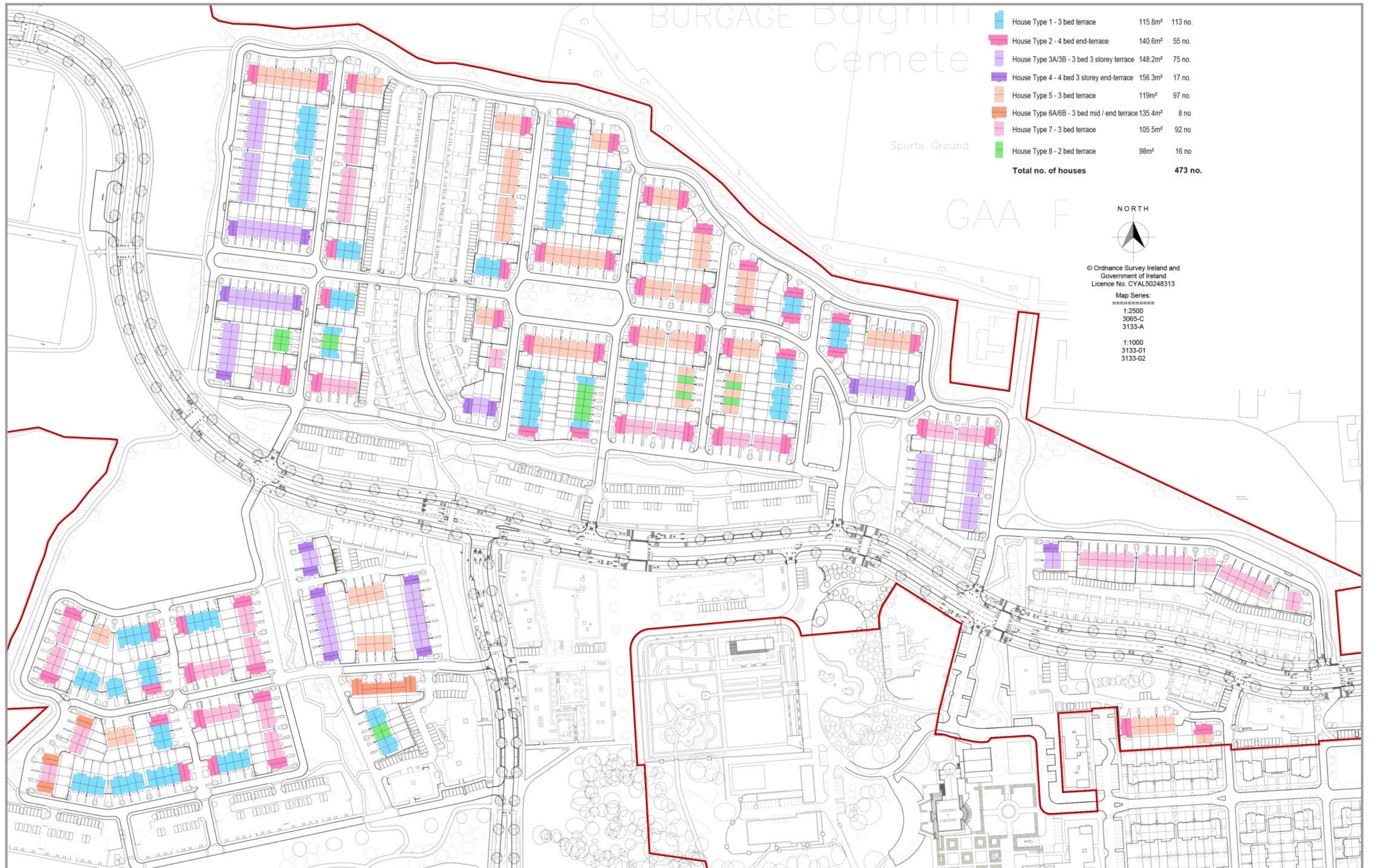
Proposed Housetypes

APRIL 2022

Gerard Gannon Properties



# ACCOMMODATION MIX - HOUSETYPES



© Ordnance Survey Ireland and Government of Ireland  
Licence No. CYAL50248313

Map Series:  
1:2500  
3065-C  
3133-A

1:1000  
3133-01  
3133-02



# CHARACTER AREA 1

## Character Area 1



Character Area 1 House-types take precedent from the house-types approved and under construction in Phase 1 in Belcamp and proportion of brick and render use will reflect that. The dominant house type in this Character Area is House-type 7, A terrace house with brick finish and bay window at ground floor.



PHASE 1 HOUSING IN BELCAMP

## SAMPLE BRICK TYPE

WASHINGTON RED MULTI RED BRICK OR SIMILAR



## TYPICAL ELEVATION IN CHARACTER AREA 1





Character Area 2



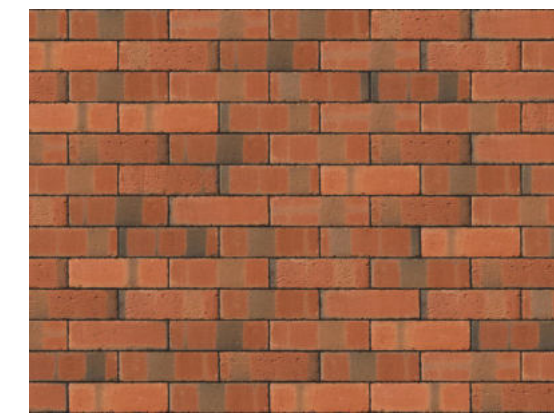
Character Area 2 differs with its use of brick on front facades. The elevational treatment sees dominant use of 'Grafton Brown Brick' or similar across the elevations. Brick also reinforces street hierarchy with prominence on street corners and those streets that look onto public green spaces. The use of flush eaves on gables and narrow fascia boards further enhances the contemporary design of the house types in this Character Area.



SAMPLE BRICK TYPE

GRAFTON BROWN BRICK OR SIMILAR

DARK GREY SECONDARY BRICK



TYPICAL ELEVATION IN CHARACTER AREA 2





Character Area 4



Character Area 4 house-types are made up a higher proportion of light-coloured smooth rendered front facades framed using a grey brick on the end of terrace houses. The grey brick is also used on features such as door surrounds on House-type 5 and bay windows on House-type 7.



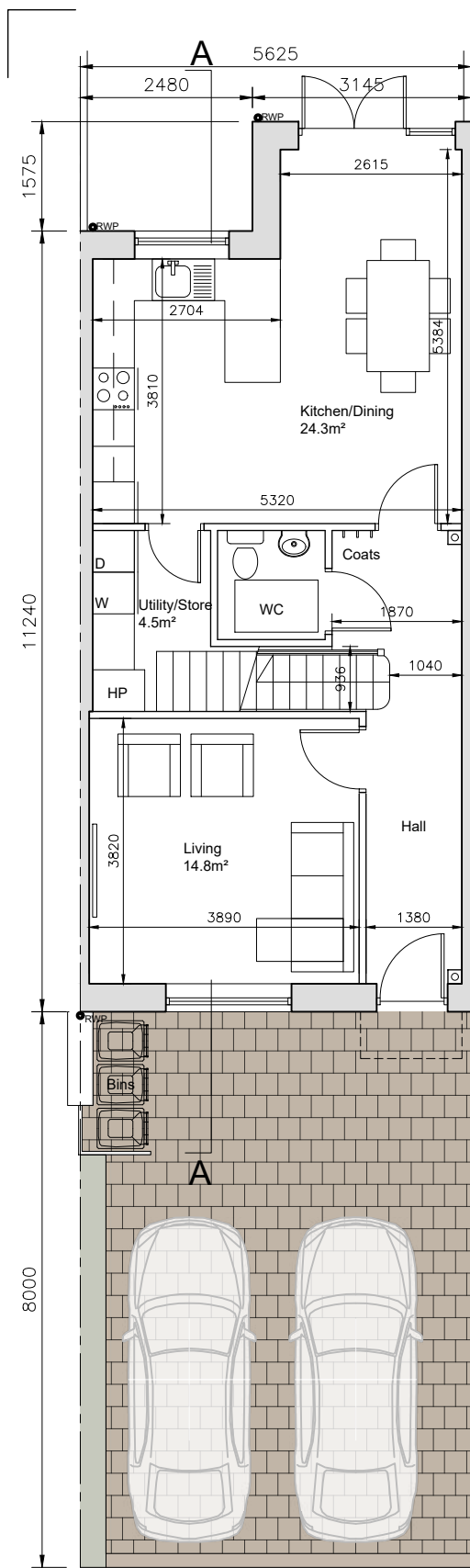
SAMPLE BRICK TYPE

QUARTIS GREY BRICK OR SIMILAR



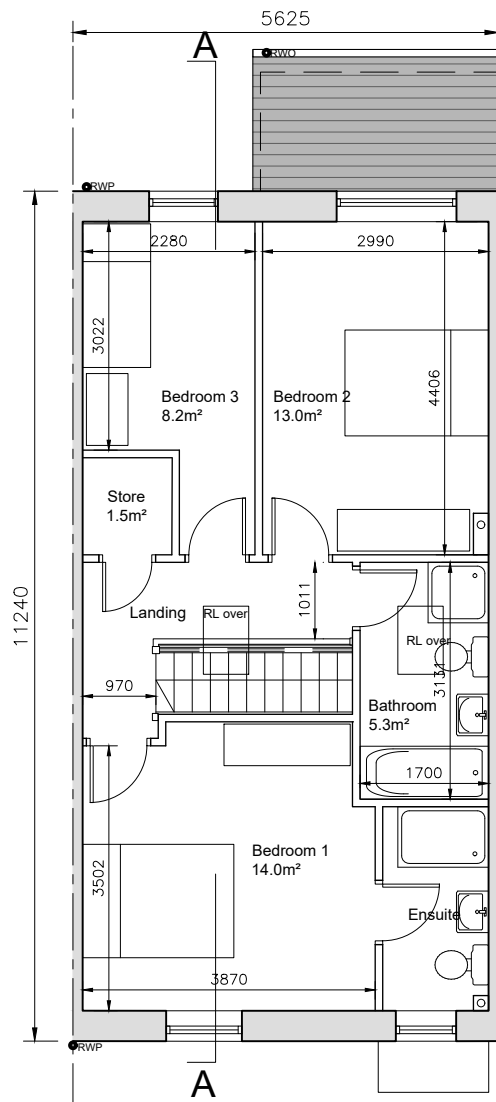
TYPICAL ELEVATION IN CHARACTER AREA 4



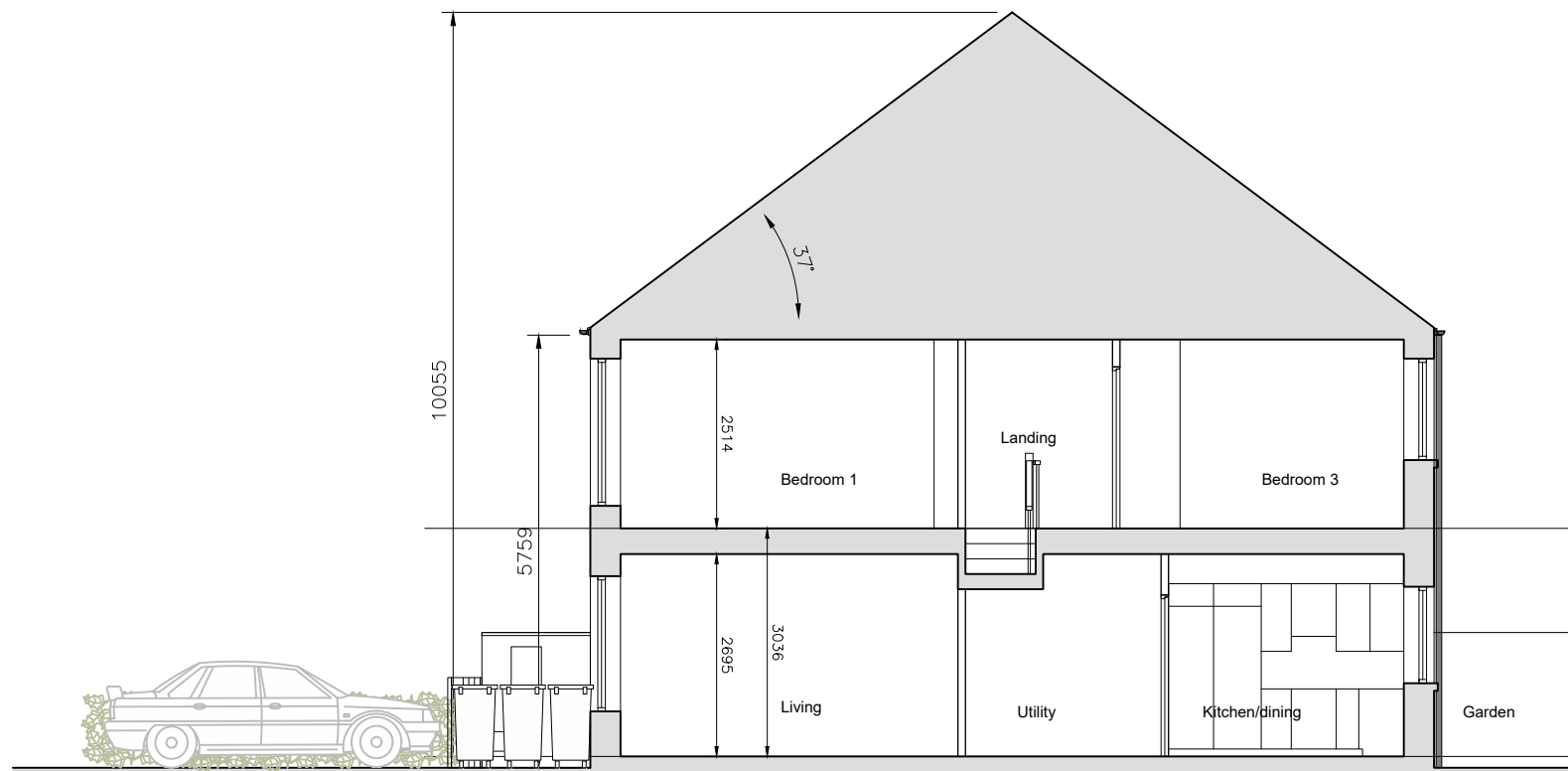


**GROUND FLOOR**  
59.8sqm

Total Floor Area 115.8 sqm



**FIRST FLOOR**  
56.0sqm



**SECTION A-A**



**Composite Elevation Example - Scale: 1:200**

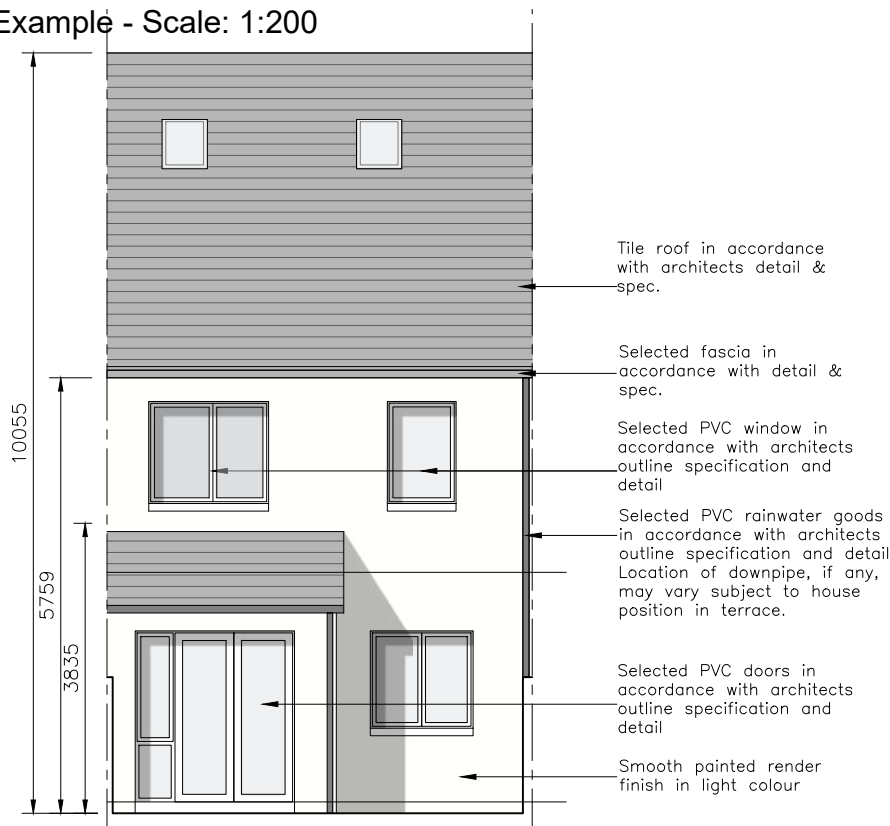
AREA PROVIDED: (m<sup>2</sup>)

3-bed/5 person, 2 storey: FCC Min.

Aggregate Living:	39.1	34
Aggregate Bedroom:	35.2	32
Storage:	6.0	5



**FRONT ELEVATION**



**REAR ELEVATION**

- © This drawing is copyright.
- 1 Do not scale this drawing.
- 2 Errors and omissions to be immediately notified to Architect.
- 3 All dimensions to be checked on site.
- 4 To be read with relevant Engineers drawings.



Refer to Site layout Plan for specific orientation of House Types.

**Notes:**

- 1. All dimensions in millimetres
- 2. Orientation varies. See site layout plan.
- 3. This Housetype may be handed. See site layout plan.
- 4. For proposed finished floor levels please refer to proposed site layout drawing.

**External Finishes:**

**Roof:**  
Slate or clay/concrete tiles with solar thermal or photovoltaic panels subject to orientation and detailed design

**Walls:**  
Painted render finish and/or Selected facing brick

**Windows:**  
uPVC framed

**Gutters/downpipes:**  
uPVC or aluminium

**Front Door:**  
Selected coloured composite or painted timber door with fanlight and/or sidelight.

**Front Door Canopy:**  
Pressed or standing seam metal on Timber framing

revisions date ins

description

House Type 1  
3 Bed Mid / End Terrace

drawing no.  
2008 PA1 401

rev/n

job  
SHD DEVELOPMENT,  
BELCAMP,  
MALAHIDE ROAD,  
DUBLIN 17.

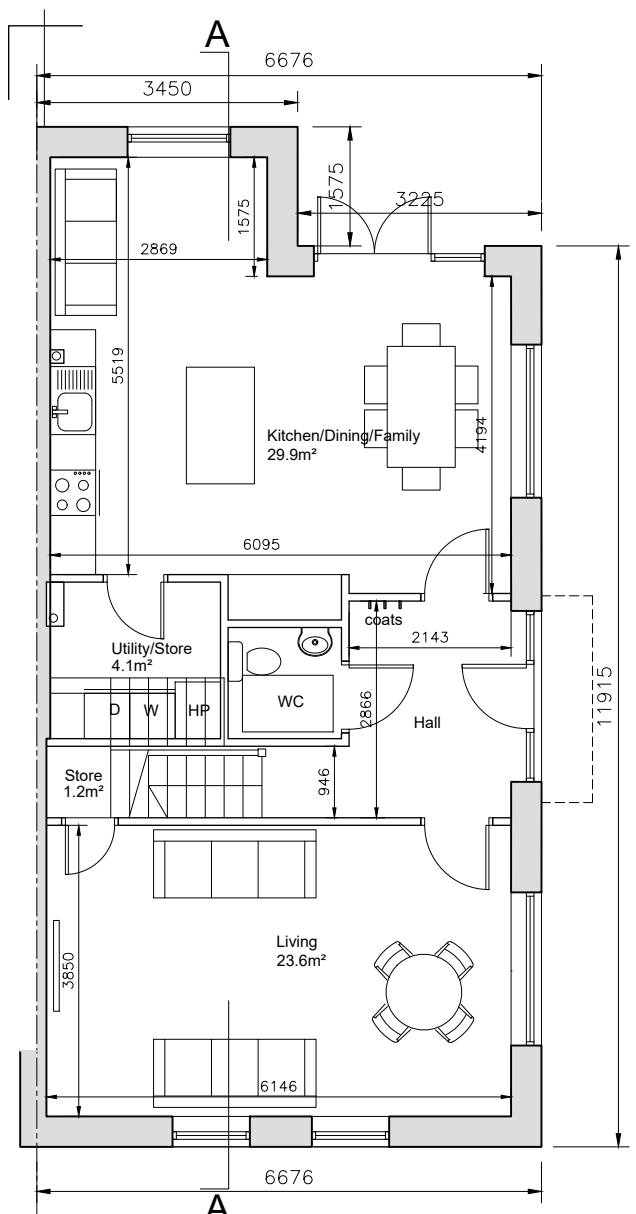
scale  
1:100  
date  
APR' 22  
drawn  
EK  
checked

client  
Gerard Gannon Properties

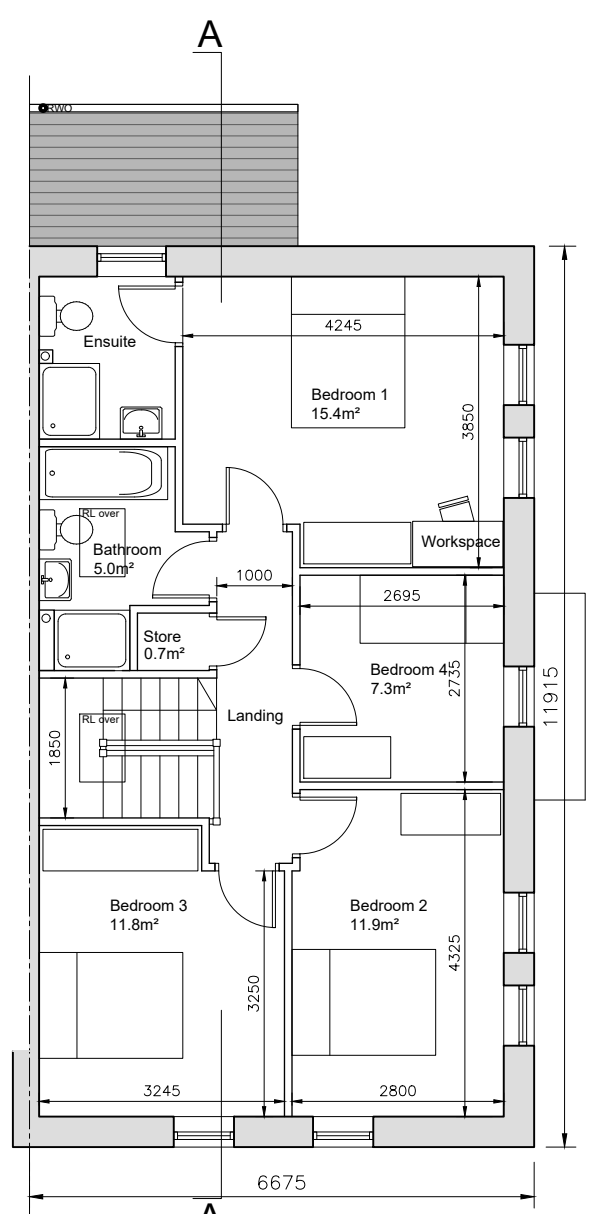
issue  
SHD PLANNING APPLICATION

**CONROY CROWE KELLY**  
ARCHITECTS & URBAN DESIGNERS  
65 MERRION SQUARE  
DUBLIN 2

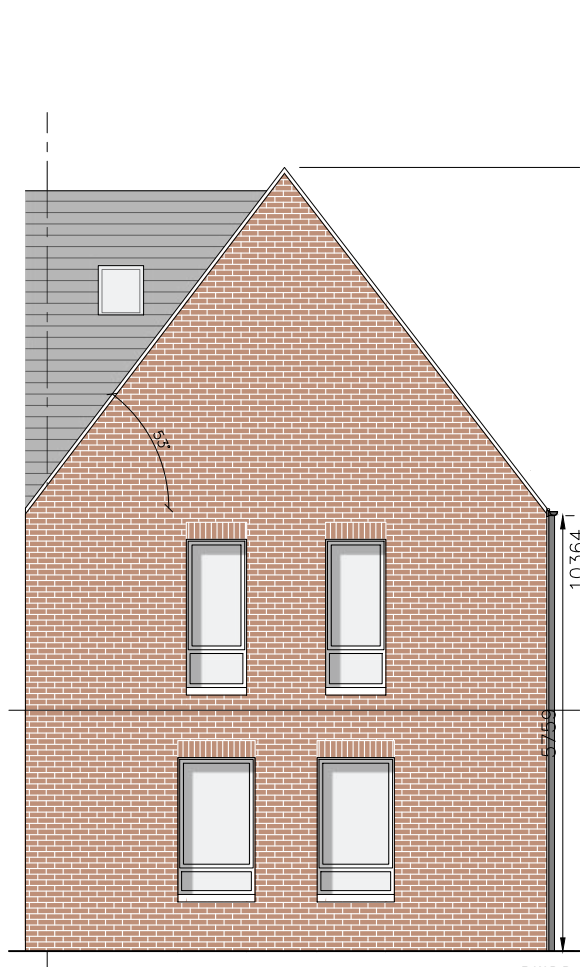
PHONE 6613990/1 FAX 6765715  
e-mail info@cck.ie



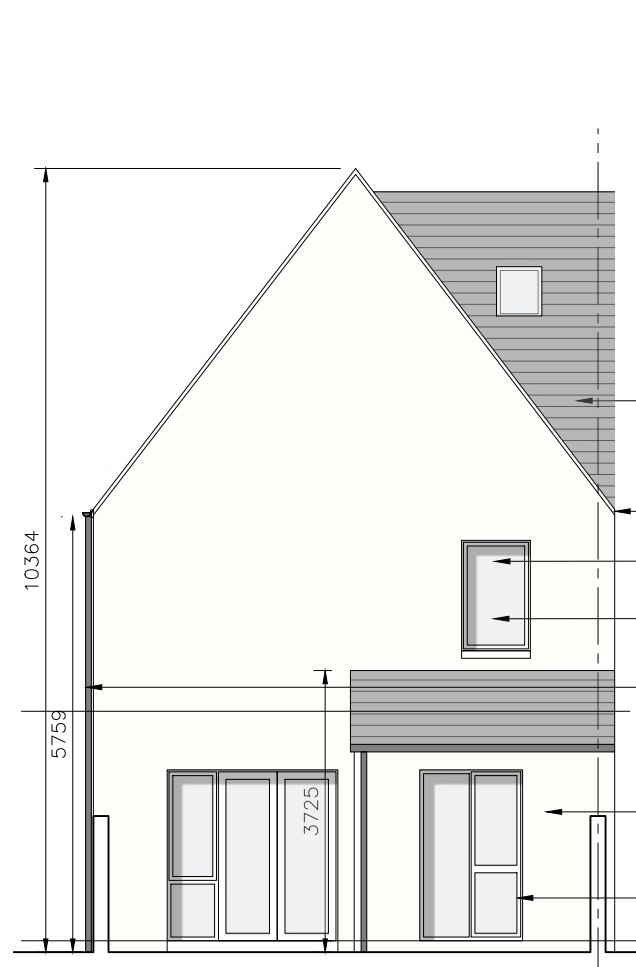
**GROUND FLOOR - 72.4 sqm**  
Total Floor Area 140.6sqm



**FIRST FLOOR - 68.2sqm**



**GABLE ELEVATION**

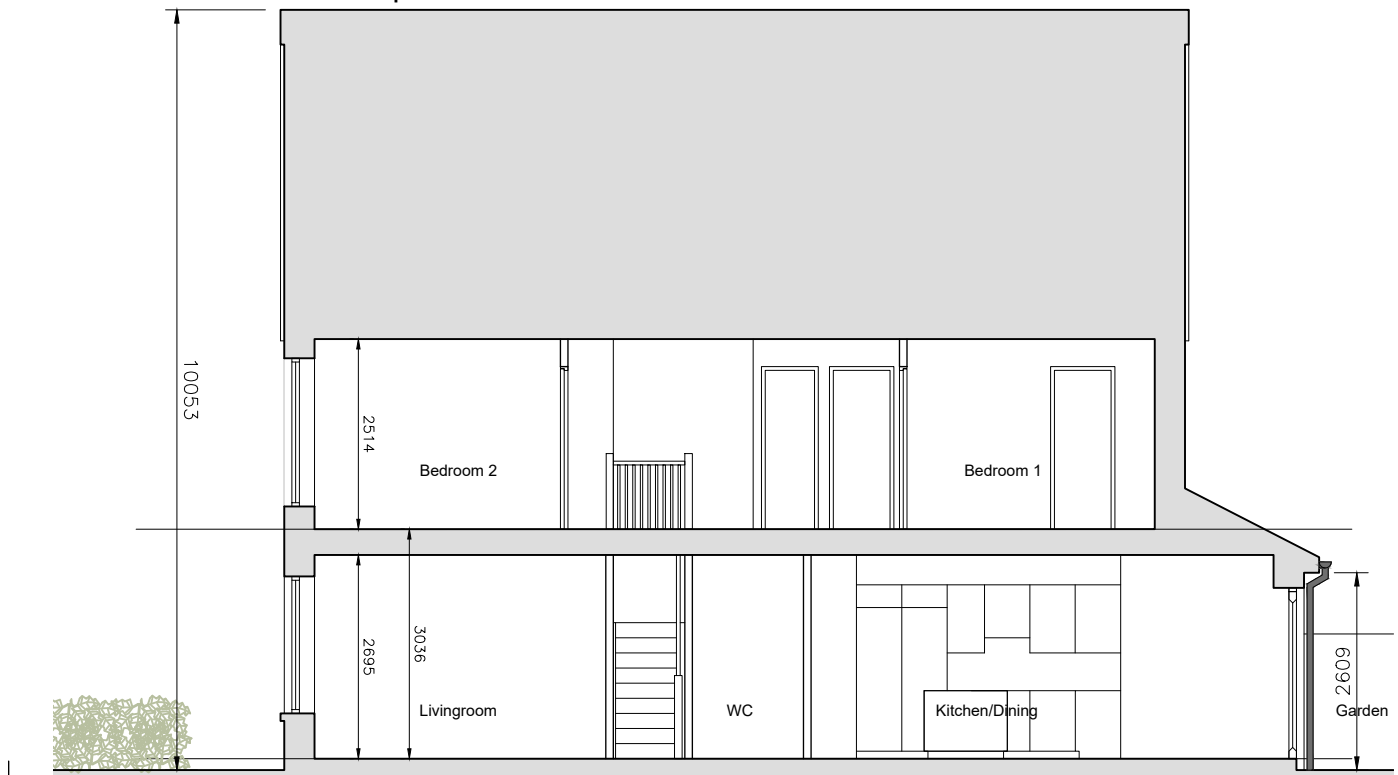


**REAR ELEVATION**

- Tile roof in accordance with architects detail & sprc.
- Selected fascia in accordance with detail & spec.
- Selected PVC window in accordance with architects outline specification and detail
- Obscured glass to ensuite window
- Selected PVC rainwater goods in accordance with architects outline specification and detail
- Location of downpipe if any may vary, subject to house position in terrace.
- Smooth painted render finish in light colour
- Selected PVC window in accordance with architects outline specification and detail

AREA PROVIDED: (m<sup>2</sup>)

	4-bed/7 person, 2 storey:	FCC Min.
Aggregate Living:	53.5	40
Aggregate Bedroom:	46.4	43
Storage:	6.0	6



**SECTION A-A**



**FRONT ELEVATION**

- Tile roof in accordance with architects detail & sprc.
- Selected fascia in accordance with detail & spec.
- Selected PVC window in accordance with architects outline specification and detail
- Selected PVC rainwater goods in accordance with architects outline specification and detail
- Location of downpipe if any may vary, subject to house position in terrace.
- Zinc or similar cladding to canopy.
- Painted timberdoor with sidelight & fanlight above.
- Brick finish to front facade.

© This drawing is copyright.  
 1 Do not scale this drawing.  
 2 Errors and omissions to be immediately notified to Architect.  
 3 All dimensions to be checked on site.  
 4 To be read with relevant Engineers drawings.

NORTH

Refer to Site layout Plan for specific orientation of House Types.

**Notes:**

- All dimensions in millimetres
- Orientation varies. See site layout plan.
- This Housetype may be handed. See site layout plan.
- For proposed finished floor levels please refer to proposed site layout drawing.

**External Finishes:**  
**Roof:** Slate or clay/concrete tiles with solar thermal or photovoltaic panels subject to orientation and detailed design  
**Walls:** Painted render finish and/or Selected facing brick  
**Windows:** uPVC framed  
**Gutters/downpipes:** uPVC or aluminium  
**Front Door:** Selected coloured composite or painted timber door with fanlight and/or sidelight.  
**Front Door Canopy:** Pressed or standing seam metal on Timber framing

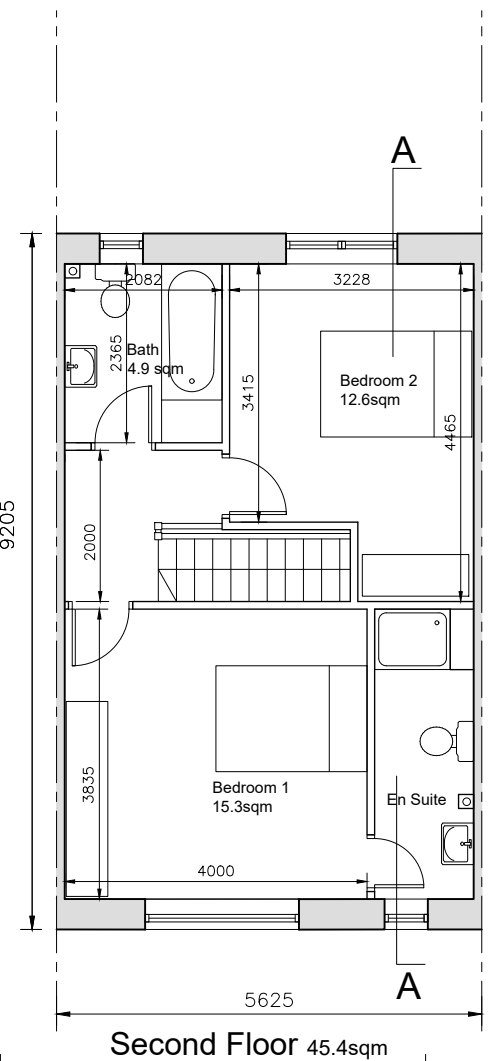
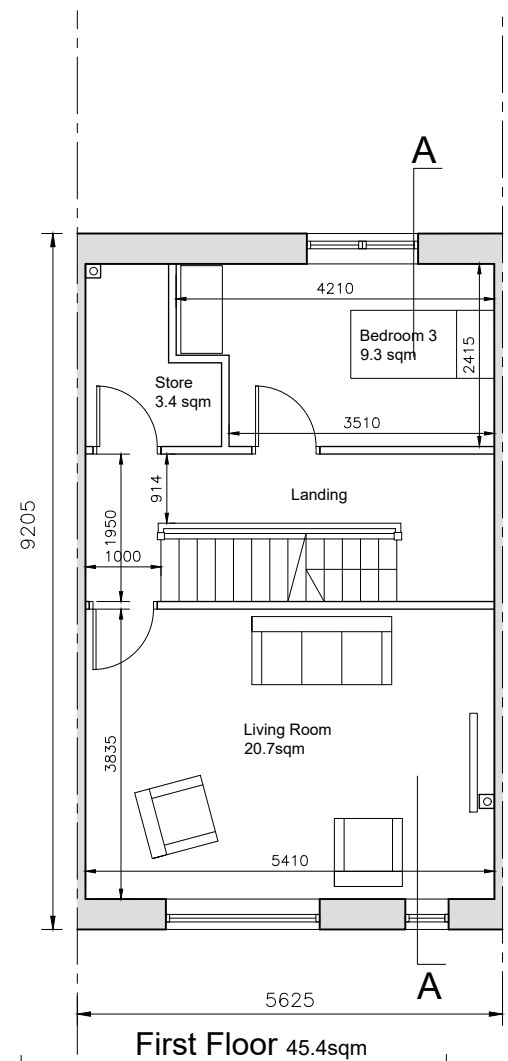
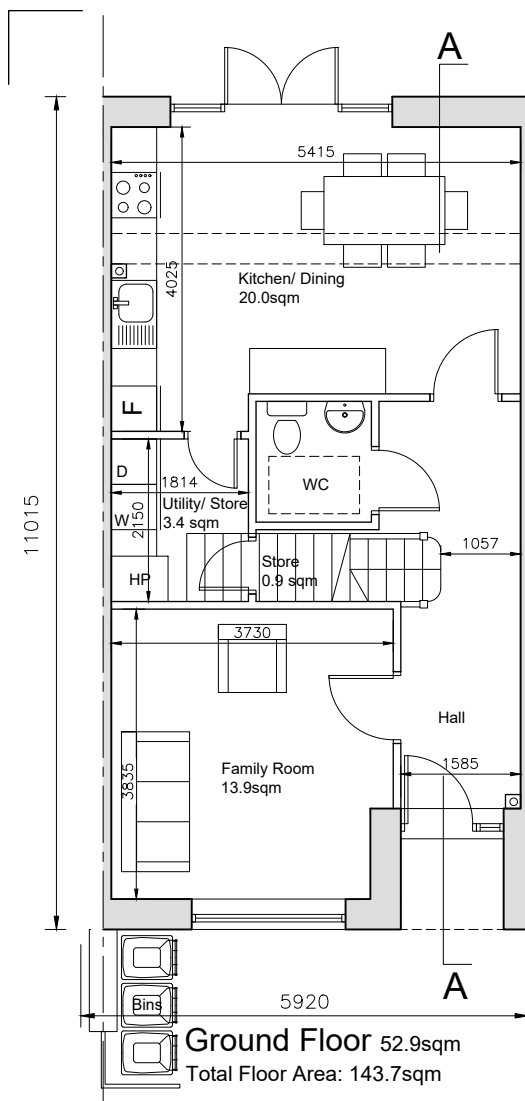
revisions	date	inls
description		
House Type 2		
4 Bed End Terrace		

client: Gerard Gannon Properties

issue: SHD PLANNING APPLICATION

**CONROY CROWE KELLY**  
 ARCHITECTS & URBAN DESIGNERS  
 65 MERRION SQUARE  
 DUBLIN 2

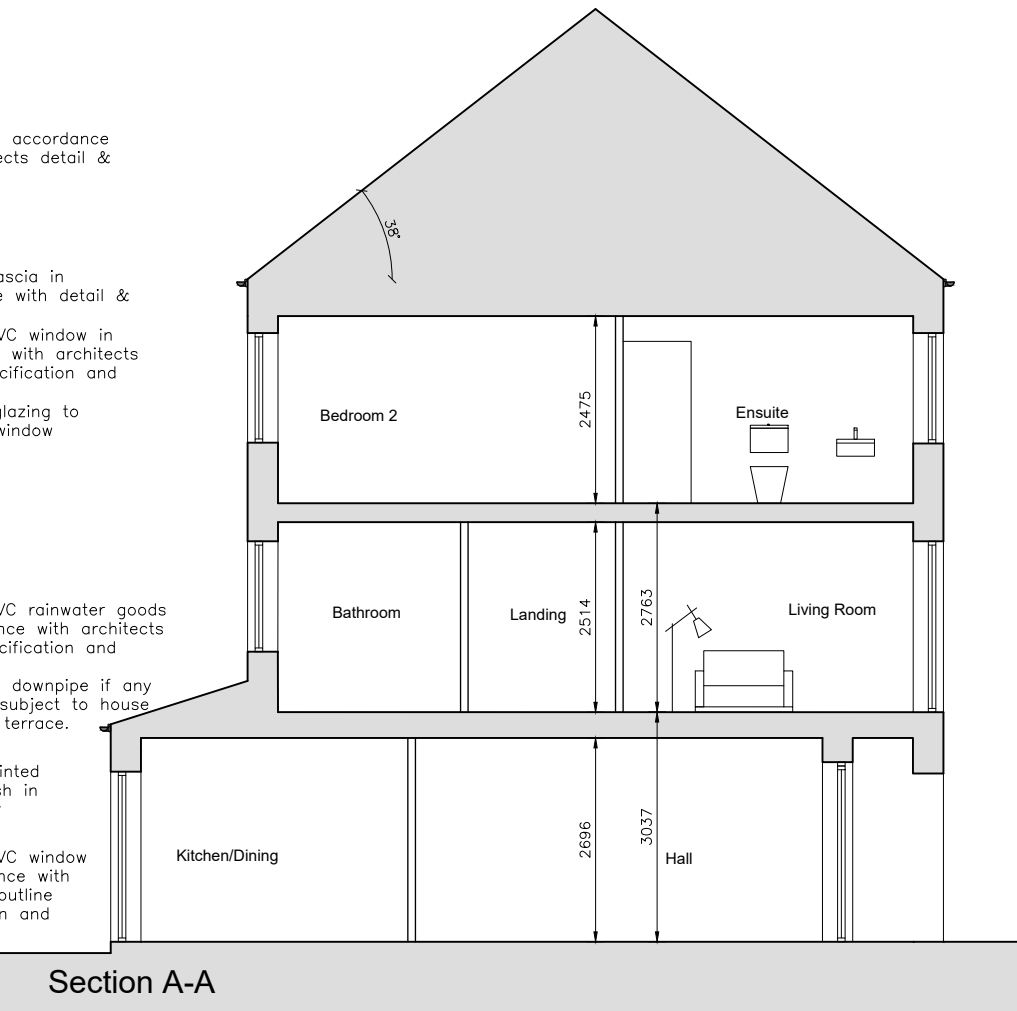
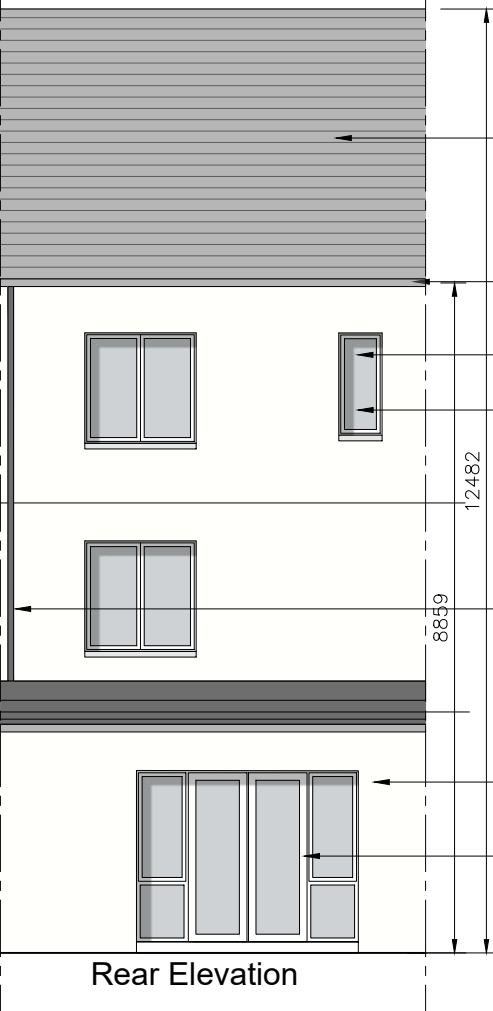
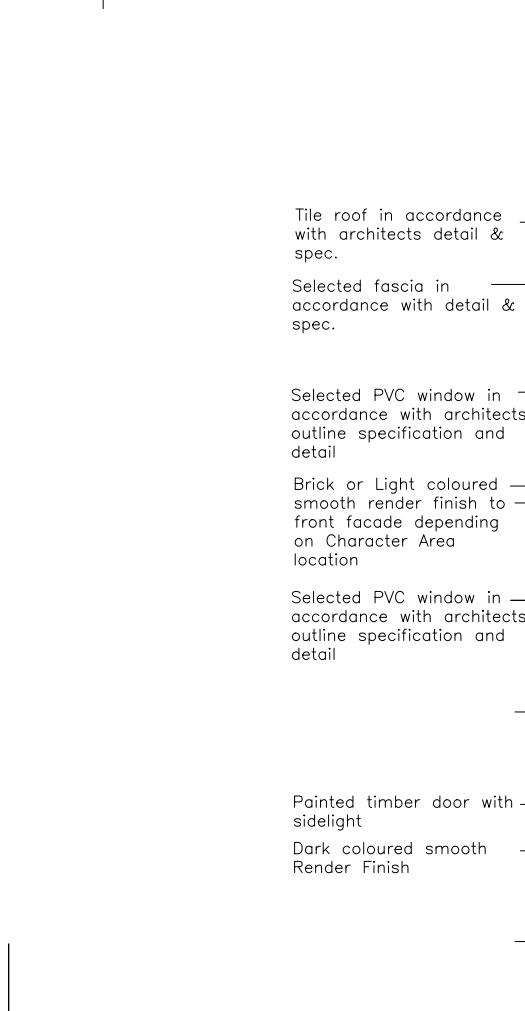
PHONE 6613990/1 FAX 6765715  
 e-mail info@ckk.ie



Composite Elevation Example - Scale: 1:200

AREA PROVIDED: (m<sup>2</sup>)

3-bed/5 person, 3 storey:	FCC Min.
Aggregate Living:	56.4 34
Aggregate Bedroom:	39.0 32
Storage:	7.7 5



- © This drawing is copyright.
- Do not scale this drawing.
  - Errors and omissions to be immediately notified to Architect.
  - All dimensions to be checked on site.
  - To be read with relevant Engineers drawings.



Refer to Site layout Plan for specific orientation of House Types.

- Notes:
- All dimensions in millimetres
  - Orientation varies. See site layout plan.
  - This Housetype may be handed. See site layout plan.
  - For proposed finished floor levels please refer to proposed site layout drawing.

External Finishes:  
Roof:  
Slate or clay/concrete tiles with solar thermal or photovoltaic panels subject to orientation and detailed design

Walls:  
Painted render finish and/or Selected facing brick

Windows:  
uPVC framed

Gutters/downpipes:  
uPVC or aluminium

Front Door:  
Selected coloured composite or painted timber door with fanlight and/or sidelight.

Front Door Canopy:  
Pressed or standing seam metal on Timber framing

revisions date inls

description	drawing no.
House Type 3A 3 Bed Mid Terrace	2008 PA1 403

job	scale
SHD DEVELOPMENT, BELCAMP, MALAHIDE ROAD, DUBLIN 17.	1:100
client	date
Gerard Gannon Properties	APR 22
issue	drawn
SHD PLANNING APPLICATION	EK
	checked

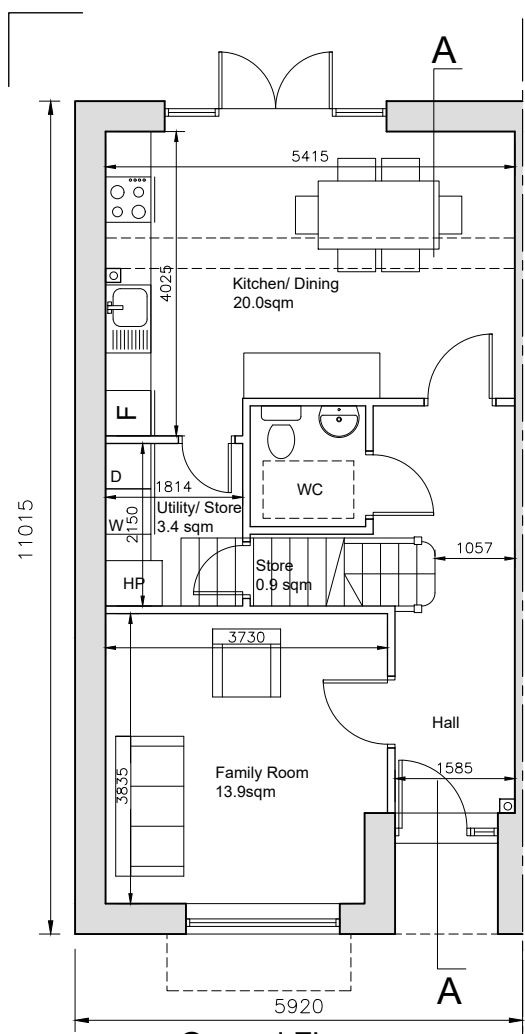
client  
Gerard Gannon Properties

issue  
SHD PLANNING APPLICATION

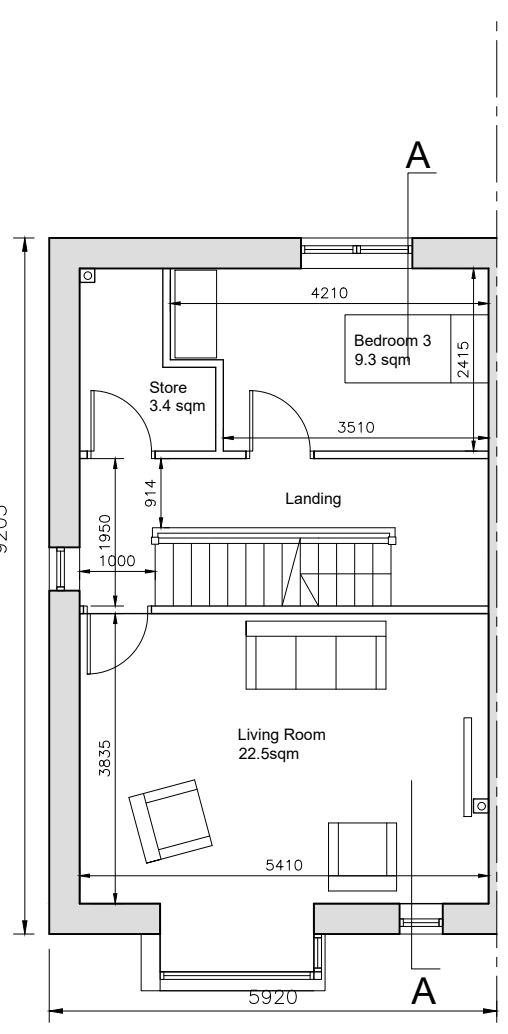
**CONROY CROWE KELLY**  
ARCHITECTS & URBAN DESIGNERS  
65 MERRION SQUARE  
DUBLIN 2

PHONE 6613990/1 FAX 6765715  
e-mail info@cck.ie

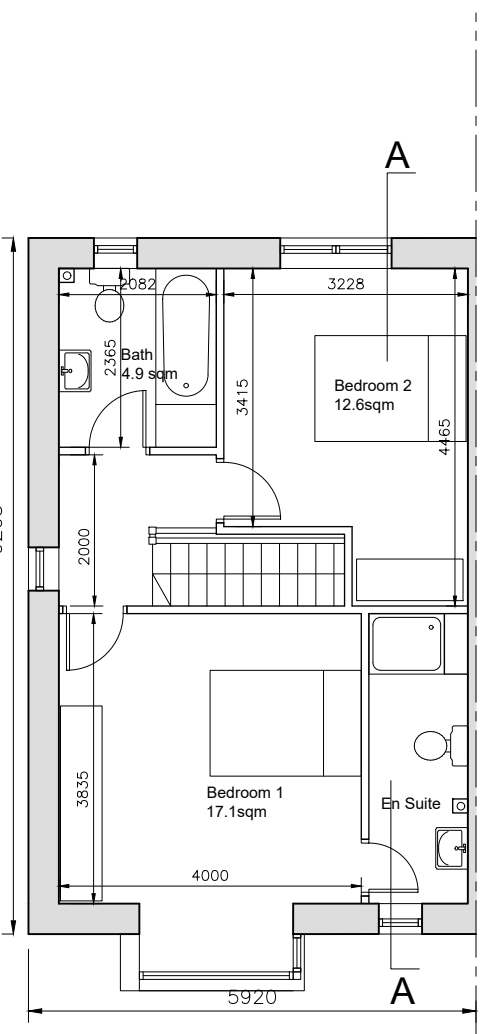




**Ground Floor 52.9sqm**  
Total Floor Area: 147.3sqm



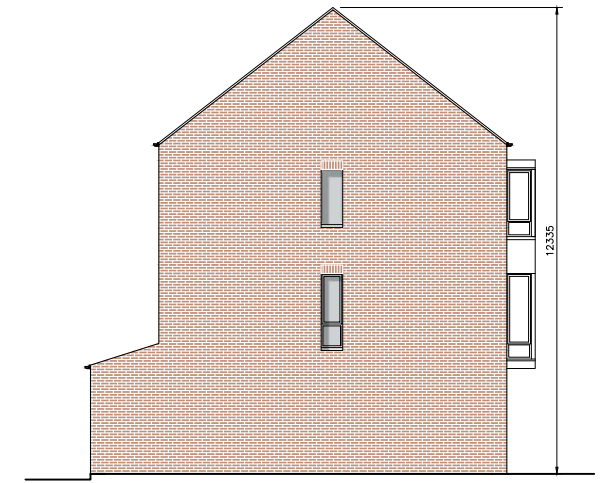
**First Floor 47.2sqm**



**Second Floor 47.2sqm**



**Composite Elevation Example - Scale: 1:200**

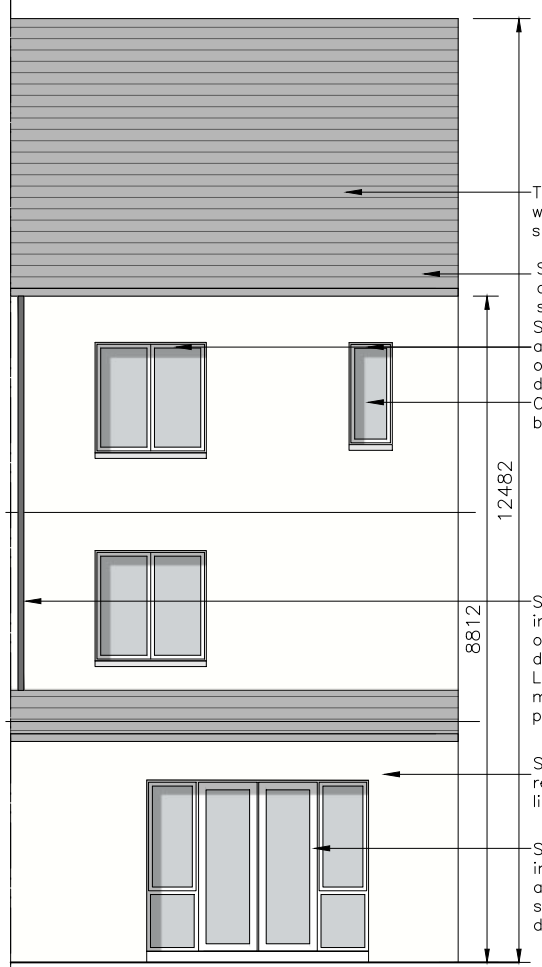


**Gable Elevation 1:200**

- Tile roof in accordance with architects detail & spec.
- Selected fascia in accordance with detail & spec.
- Selected PVC window in accordance with architects outline specification and detail
- Zinc or similar metal cladding to window projection
- Selected PVC window in accordance with architects outline specification and detail
- Brick or Light coloured smooth render finish to front facade depending on Character Area location
- Painted timber door with sidelight
- Dark coloured smooth Render Finish



**Front Elevation**

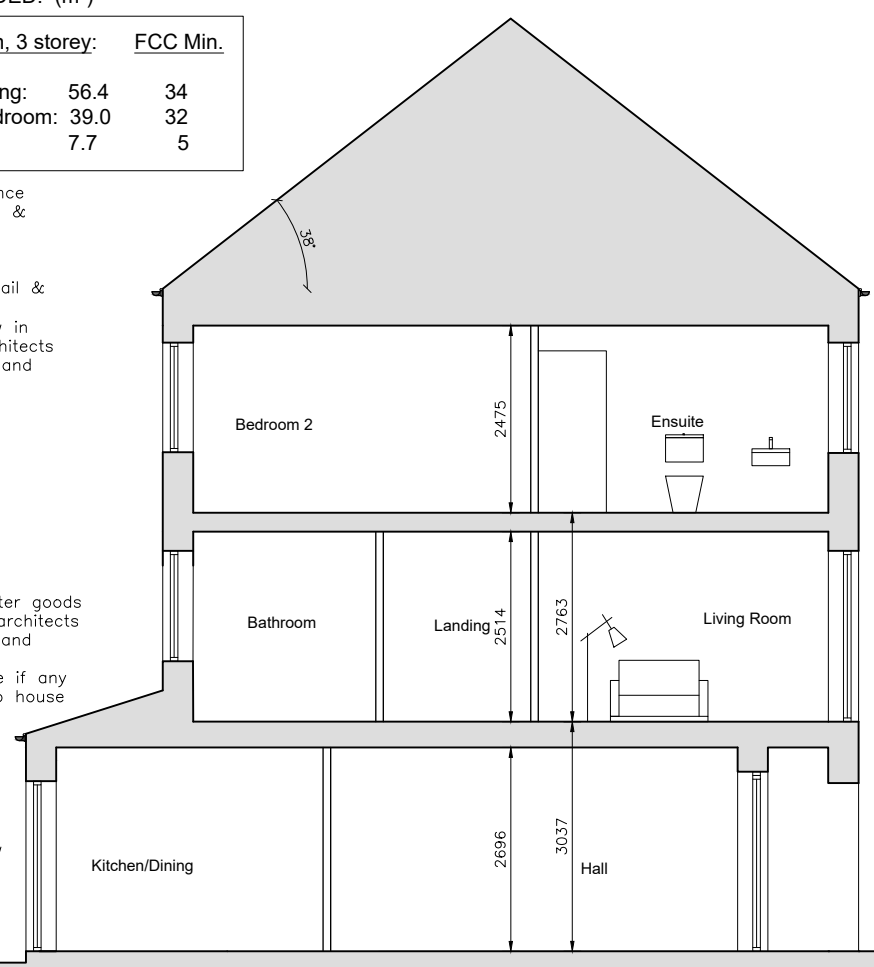


**Rear Elevation**

**AREA PROVIDED: (m<sup>2</sup>)**

	3-bed/5 person, 3 storey:	FCC Min.
Aggregate Living:	56.4	34
Aggregate Bedroom:	39.0	32
Storage:	7.7	5

- Tile roof in accordance with architects detail & spec.
- Selected fascia in accordance with detail & spec.
- Selected PVC window in accordance with architects outline specification and detail
- Obscured glazing to bathroom window
- Selected PVC rainwater goods in accordance with architects outline specification and detail
- Location of downpipe if any may vary, subject to house position in terrace.
- Smooth painted render finish in light colour
- Selected PVC window in accordance with architects outline specification and detail



**Section A-A**

- © This drawing is copyright.
- 1 Do not scale this drawing.
- 2 Errors and omissions to be immediately notified to Architect.
- 3 All dimensions to be checked on site.
- 4 To be read with relevant Engineers drawings.



Refer to Site layout Plan for specific orientation of House Types.

- Notes:
1. All dimensions in millimetres
  2. Orientation varies. See site layout plan.
  3. This Housetype may be handed. See site layout plan.
  4. For proposed finished floor levels please refer to proposed site layout drawing.

**External Finishes:**  
Roof:  
Slate or clay/concrete tiles with solar thermal or photovoltaic panels subject to orientation and detailed design

**Walls:**  
Painted render finish and/or Selected facing brick

**Windows:**  
uPVC framed

**Gutters/downpipes:**  
uPVC or aluminium

**Front Door:**  
Selected coloured composite or painted timber door with fanlight and/or sidelight.

**Front Door Canopy:**  
Pressed or standing seam metal on Timber framing

revisions description date inls

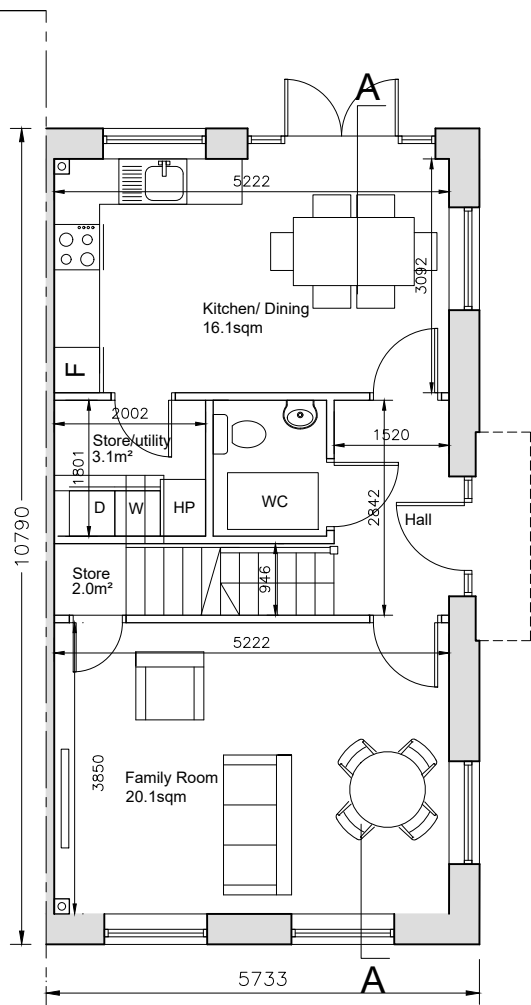
House Type 3B	drawing no.	2008 PA1 404
3 Bed Mid / End Terrace	date	10/03/2008
	scale	1:100
	date	APR 22
	drawn	EK
	checked	
job	client	SHD DEVELOPMENT, BELCAMP, MALAHIDE ROAD, DUBLIN 17.
client	issue	Gerard Gannon Properties

**SHD PLANNING APPLICATION**

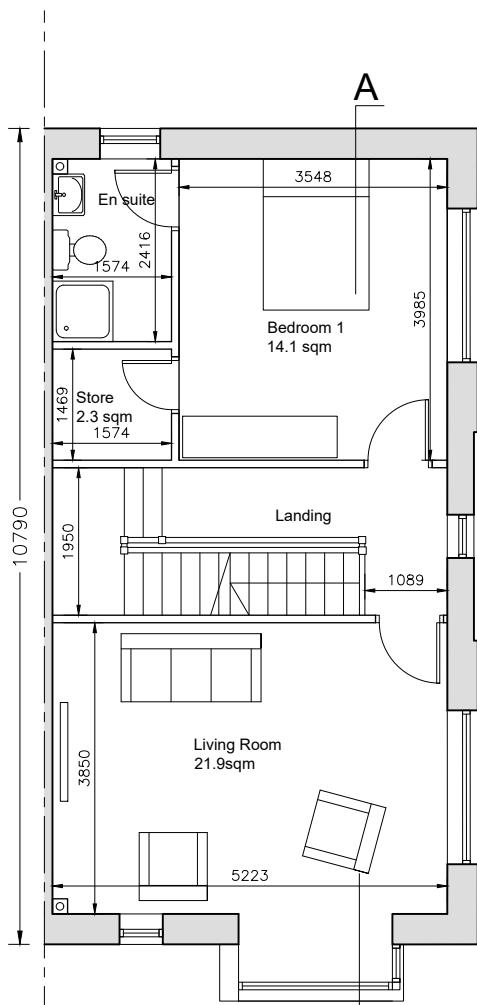
**CONROY CROWE KELLY**  
ARCHITECTS & URBAN DESIGNERS  
65 MERRION SQUARE  
DUBLIN 2

PHONE 6613990/1 FAX 6765715  
e-mail info@cck.ie

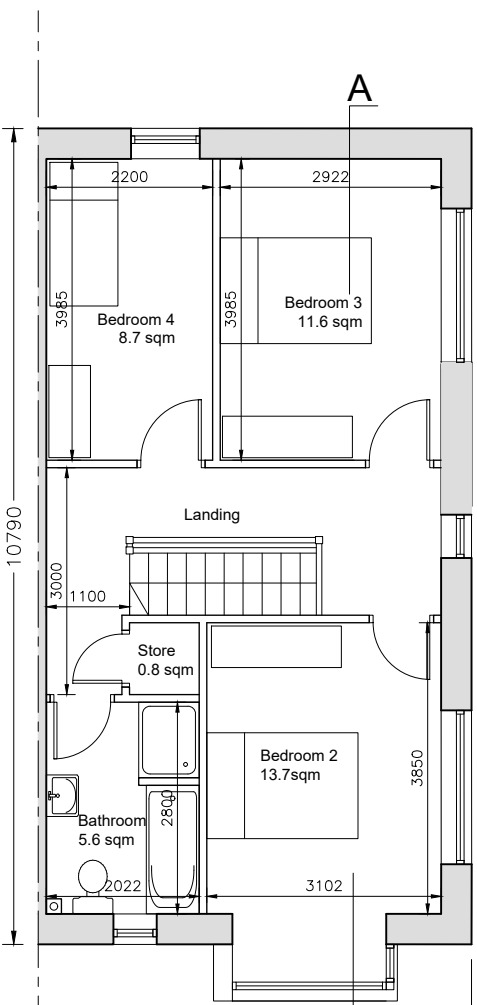




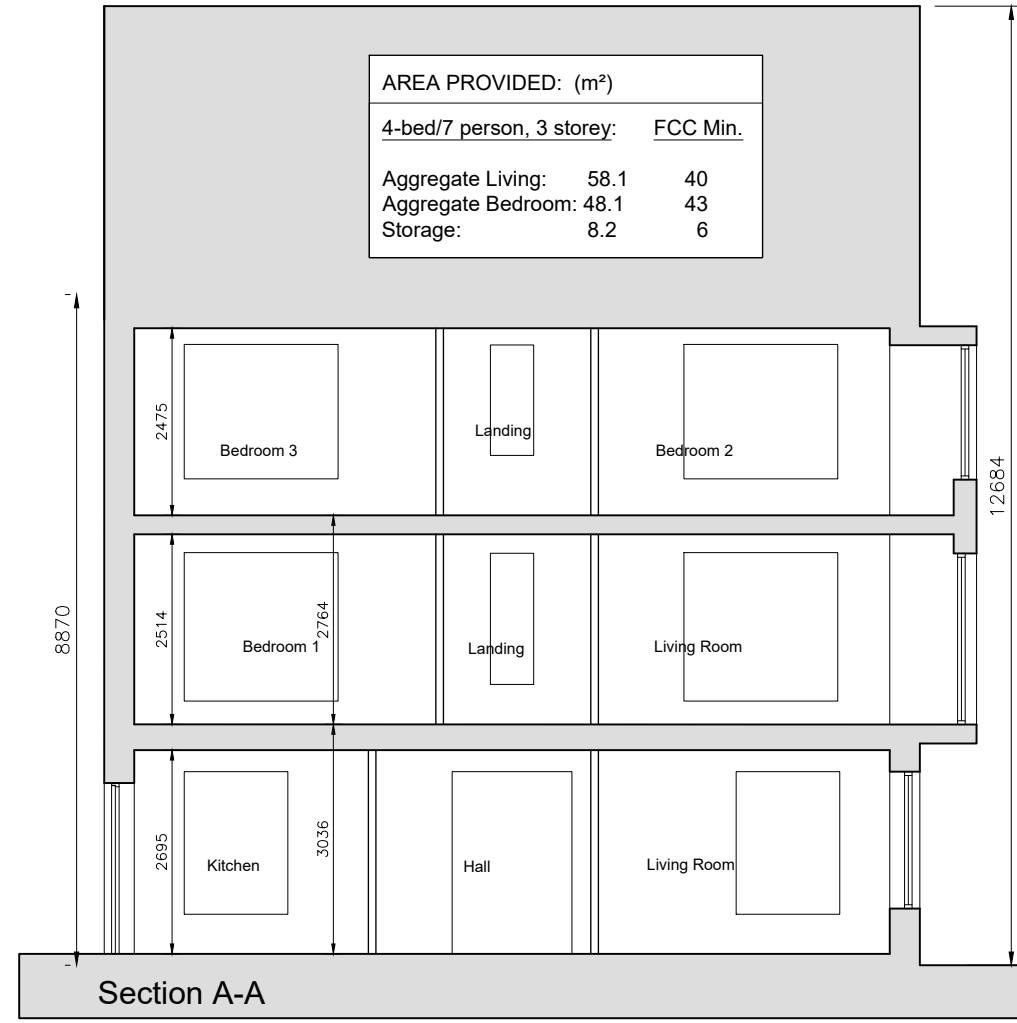
**Ground Floor** 52.1sqm  
**Total Floor Area** 159.9 sqm



**First Floor** 53.9sqm



**Second Floor** 53.9sqm



AREA PROVIDED: (m <sup>2</sup> )		
4-bed/7 person, 3 storey: FCC Min.		
Aggregate Living:	58.1	40
Aggregate Bedroom:	48.1	43
Storage:	8.2	6

- © This drawing is copyright.
- 1 Do not scale this drawing.
- 2 Errors and omissions to be immediately notified to Architect.
- 3 All dimensions to be checked on site.
- 4 To be read with relevant Engineers drawings.



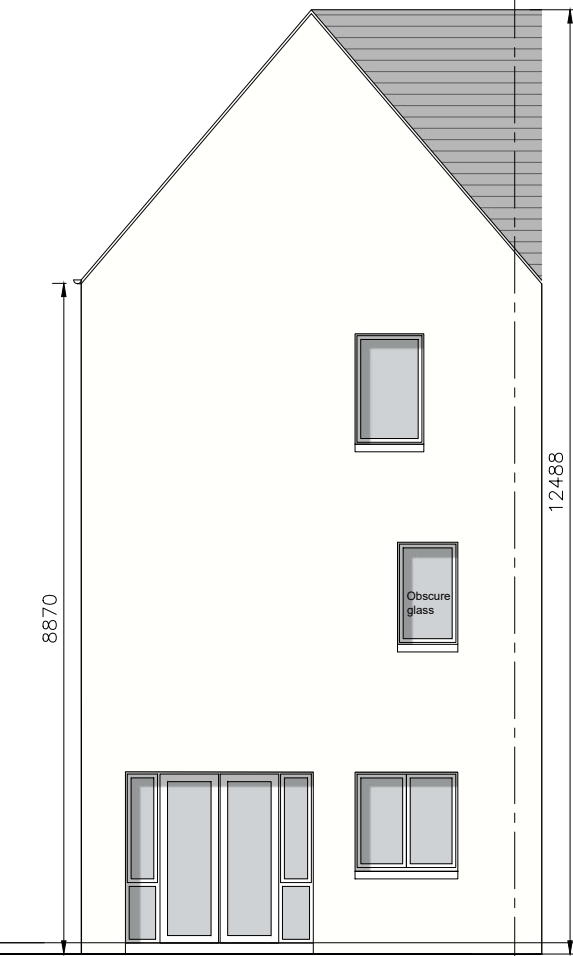
- Refer to Site layout Plan for specific orientation of House Types.
- Notes:**
1. All dimensions in millimetres
  2. Orientation varies. See site layout plan.
  3. This Housetype may be handed. See site layout plan.
  4. For proposed finished floor levels please refer to proposed site layout drawing.

- External Finishes:**
- Roof:**  
Slate or clay/concrete tiles with solar thermal or photovoltaic panels subject to orientation and detailed design
- Walls:**  
Painted render finish and/or Selected facing brick
- Windows:**  
uPVC framed
- Gutters/downpipes:**  
uPVC or aluminium
- Front Door:**  
Selected coloured composite or painted timber door with fanlight and/or sidelight.
- Front Door Canopy:**  
Pressed or standing seam metal on Timber framing

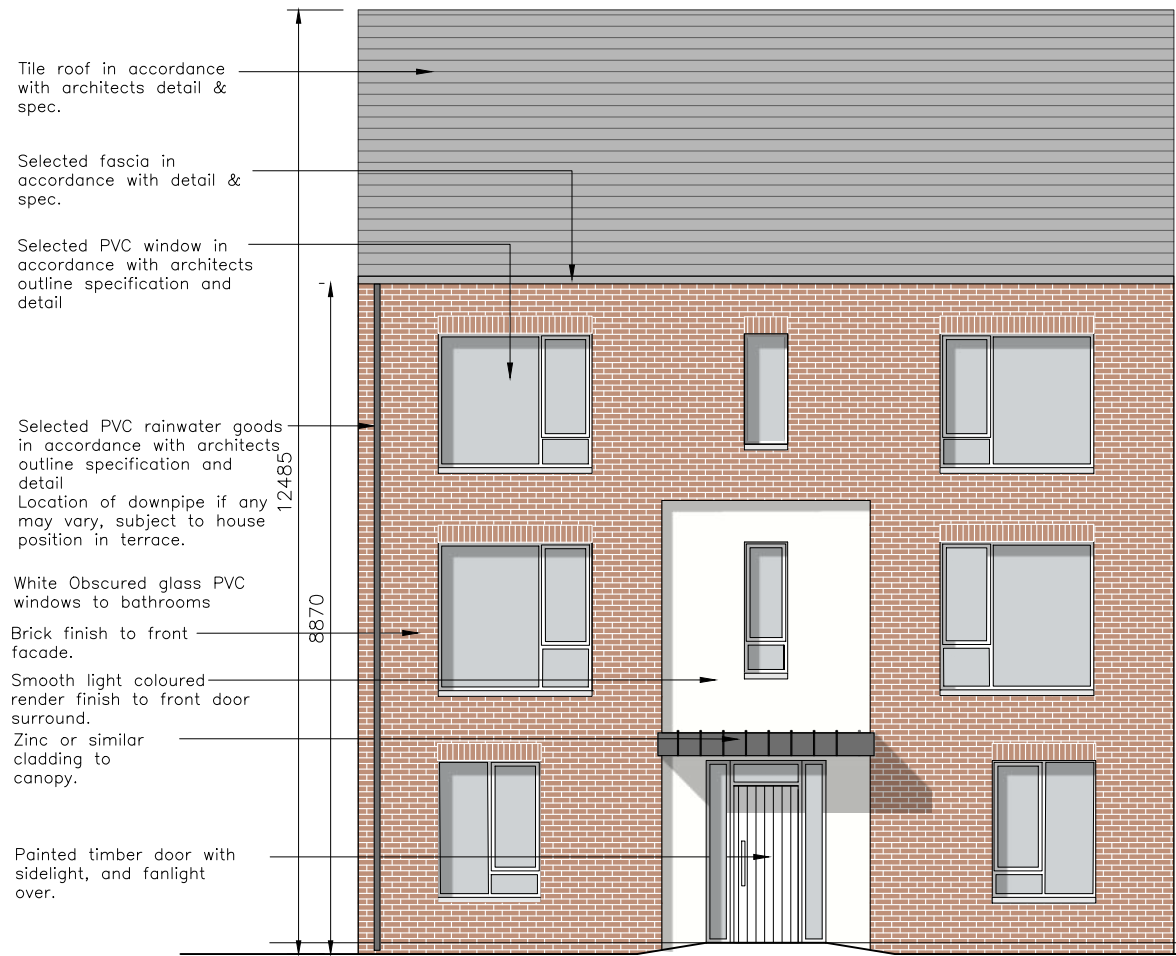
revisions	date	ins
description		
<b>House Type 4</b>		
<b>4 Bed End Terrace</b>		
drawing no.		2008 PA1 405
job		SHD DEVELOPMENT, BELCAMP, MALAHIDE ROAD, DUBLIN 17.
client		Gerard Gannon Properties
issue		SHD PLANNING APPLICATION
scale		1:100
date		APR '22
drawn		EK
checked		



**Gable Elevation to Street**



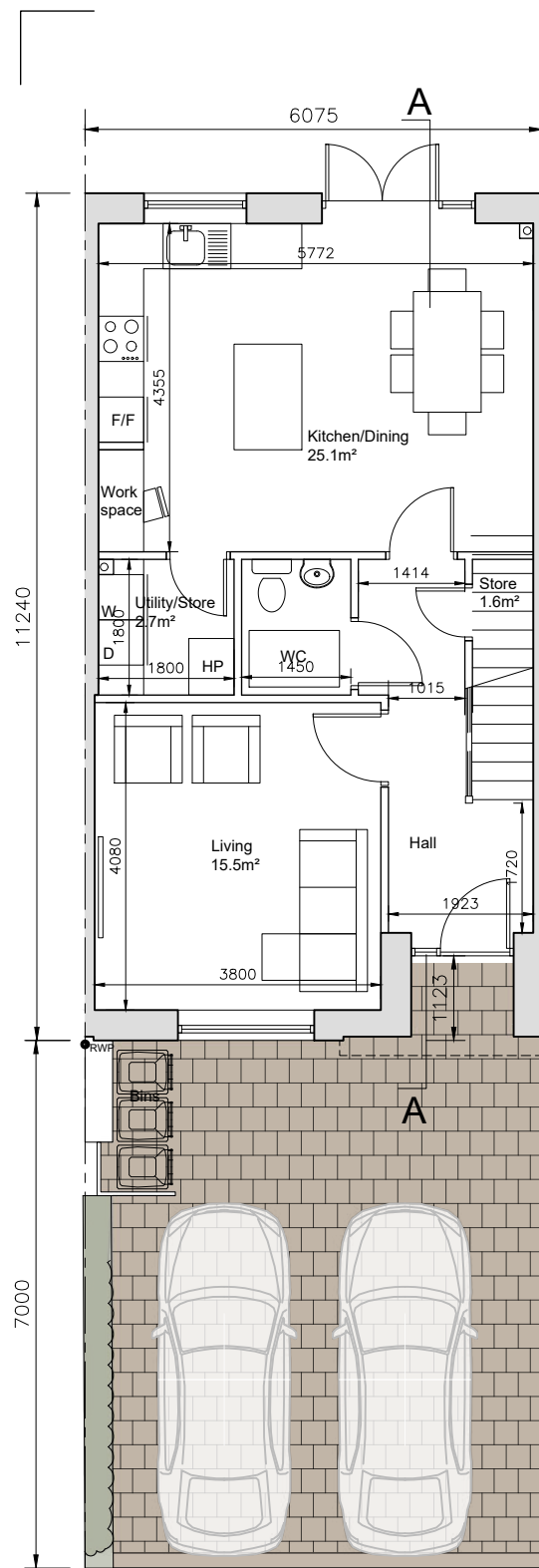
**Gable Elevation to Garden**



**Front Elevation**

- Tile roof in accordance with architects detail & spec.
- Selected fascia in accordance with detail & spec.
- Selected PVC window in accordance with architects outline specification and detail
- Selected PVC rainwater goods in accordance with architects outline specification and detail  
Location of downpipe if any may vary, subject to house position in terrace.
- White Obscured glass PVC windows to bathrooms
- Brick finish to front facade.
- Smooth light coloured render finish to front door surround.
- Zinc or similar cladding to canopy.
- Painted timber door with sidelight, and fanlight over.

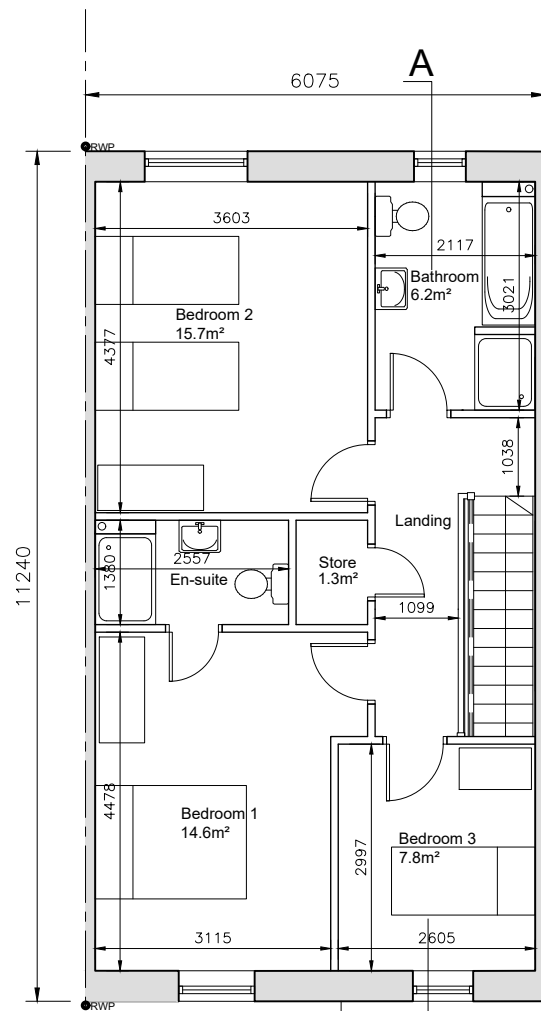




**GROUND FLOOR**  
58.3sqm  
Total Floor Area 119.0 sqm

AREA PROVIDED: (m²)

3-bed/5 person, 2 storey:	FCC Min.
Aggregate Living:	40.6 34
Aggregate Bedroom:	38.1 32
Storage:	5.6 5

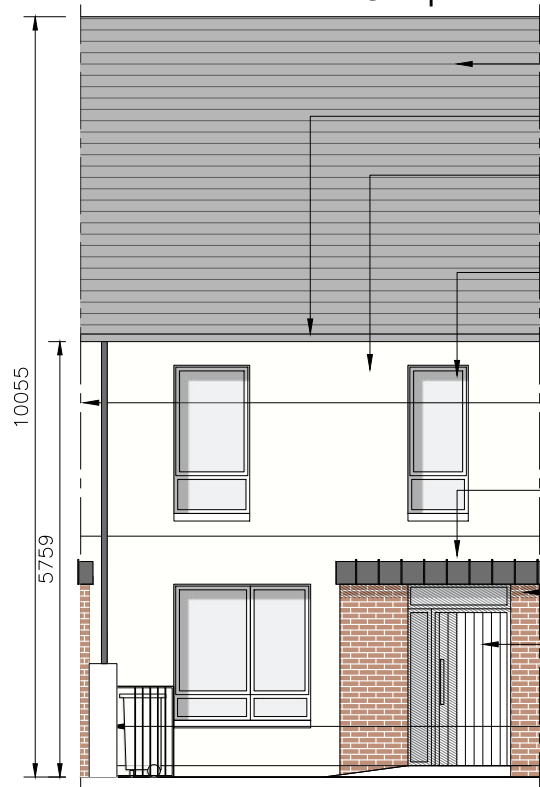


**FIRST FLOOR**  
60.7sqm



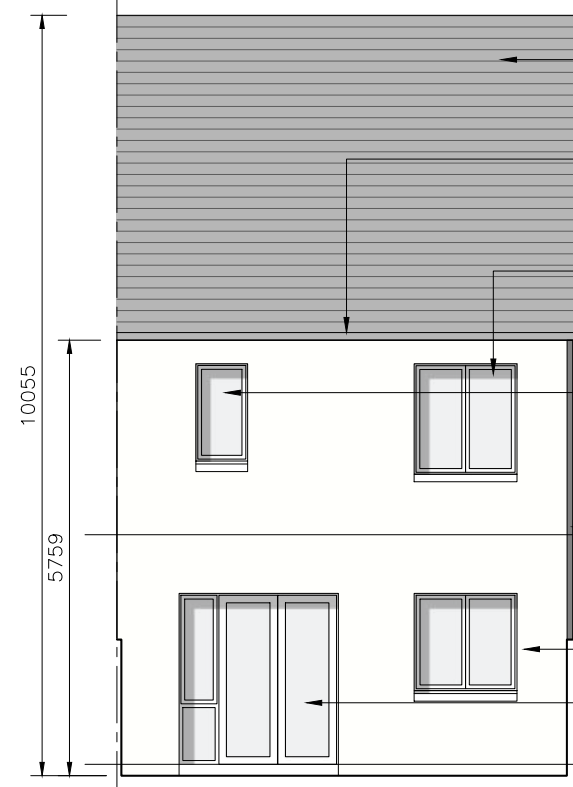
**SECTION A-A**

**Composite Elevation Example - Scale: 1:200**



**FRONT ELEVATION**

- Tile roof in accordance with architects detail & spEc.
- Selected fascia in accordance with detail & spec.
- Rendered wall in accordance with architects outline specification and detail.
- Selected PVC window in accordance with architects outline specification and detail
- Selected PVC rainwater goods in accordance with architects outline specification and detail
- Location of downpipe if any may vary, subject to house position in terrace.
- Zinc or similar cladding to canopy.
- Recessed brick finish to front door
- Painted timber door with sidelight and fanlight above.
- Smooth painted render in light colour and concrete capping to gossip wall, with pointed steel railings to bin store.



**REAR ELEVATION**

- Tile roof in accordance with architects detail & sprc.
- Selected fascia in accordance with detail & spec.
- Selected PVC window in accordance with architects outline specification and detail
- Obscured glass to bathroom window
- Selected PVC rainwater goods in accordance with architects outline specification and detail
- Location of downpipe if any may vary, subject to house position in terrace.
- Smooth painted render finish in light colour
- Selected PVC window in accordance with architects outline specification and detail

© This drawing is copyright.  
 1 Do not scale this drawing.  
 2 Errors and omissions to be immediately notified to Architect.  
 3 All dimensions to be checked on site.  
 4 To be read with relevant Engineers drawings.

NORTH

Refer to Site layout Plan for specific orientation of House Types.

**Notes:**

- All dimensions in millimetres
- Orientation varies. See site layout plan.
- This Housetype may be handed. See site layout plan.
- For proposed finished floor levels please refer to proposed site layout drawing.

**External Finishes:**  
**Roof:**  
 Slate or clay/concrete tiles with solar thermal or photovoltaic panels subject to orientation and detailed design

**Walls:**  
 Painted render finish and/or Selected facing brick

**Windows:**  
 uPVC framed

**Gutters/downpipes:**  
 uPVC or aluminium

**Front Door:**  
 Selected coloured composite or painted timber door with fanlight and/or sidelight.

**Front Door Canopy:**  
 Pressed or standing seam metal on Timber framing

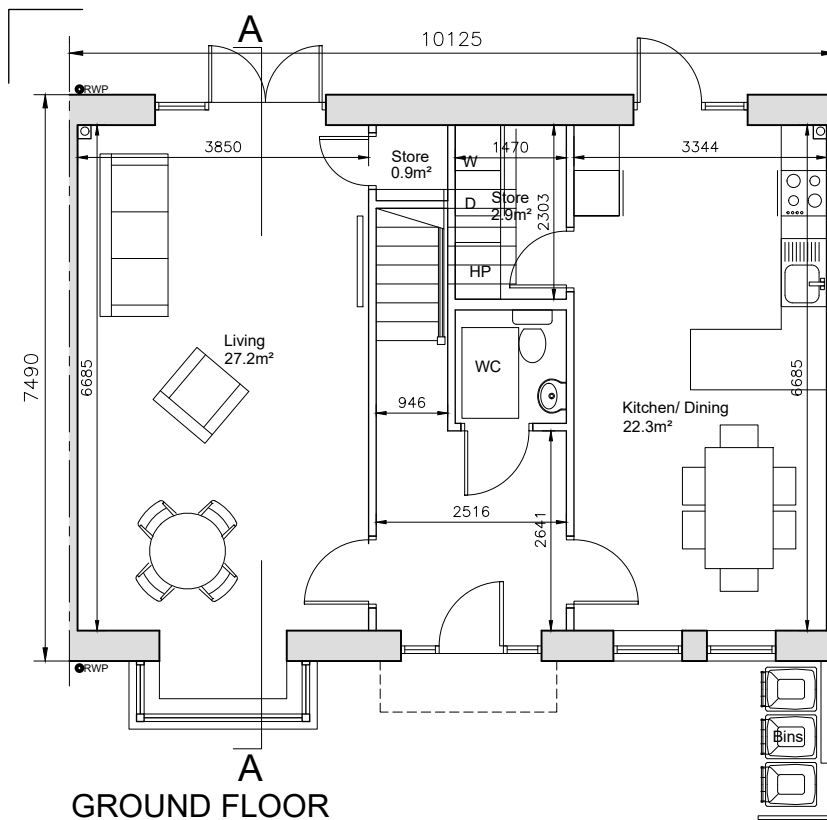
revisions	description	date inls

job: SHD DEVELOPMENT, BELCAMP, MALAHIDE ROAD, DUBLIN 17.  
 client: Gerard Gannon Properties  
 issue: SHD PLANNING APPLICATION

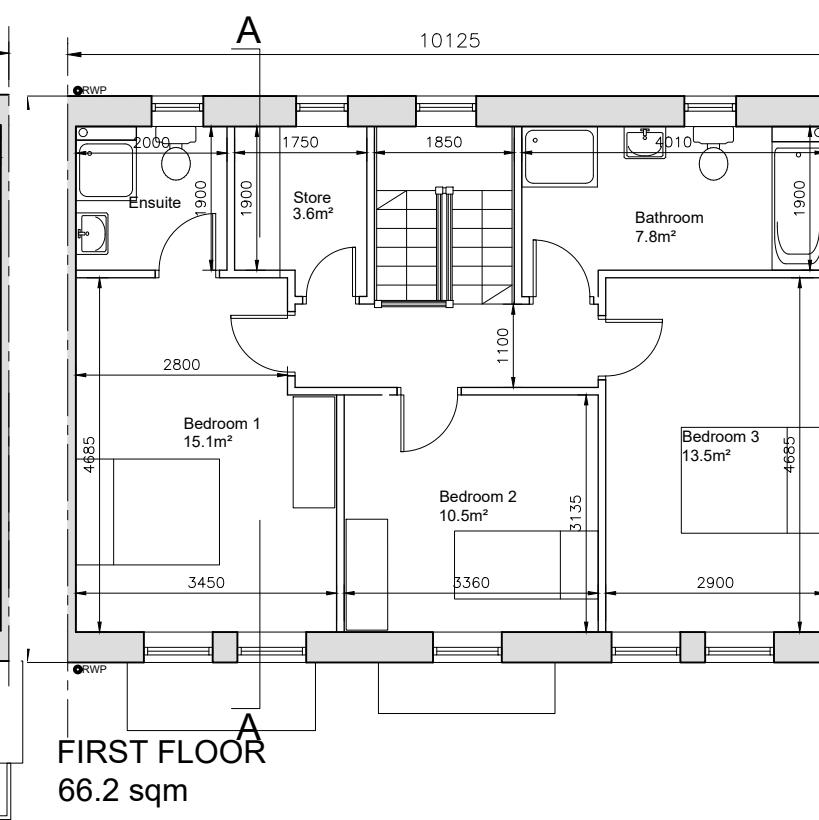
**CONROY CROWE KELLY**  
 ARCHITECTS & URBAN DESIGNERS  
 65 MERRION SQUARE  
 DUBLIN 2  
 PHONE 6613990/1 FAX 6765715  
 e-mail info@cck.ie

drawing no. 2008 PA 1 406  
 scale 1:100  
 date APR '22  
 drawn EK  
 checked

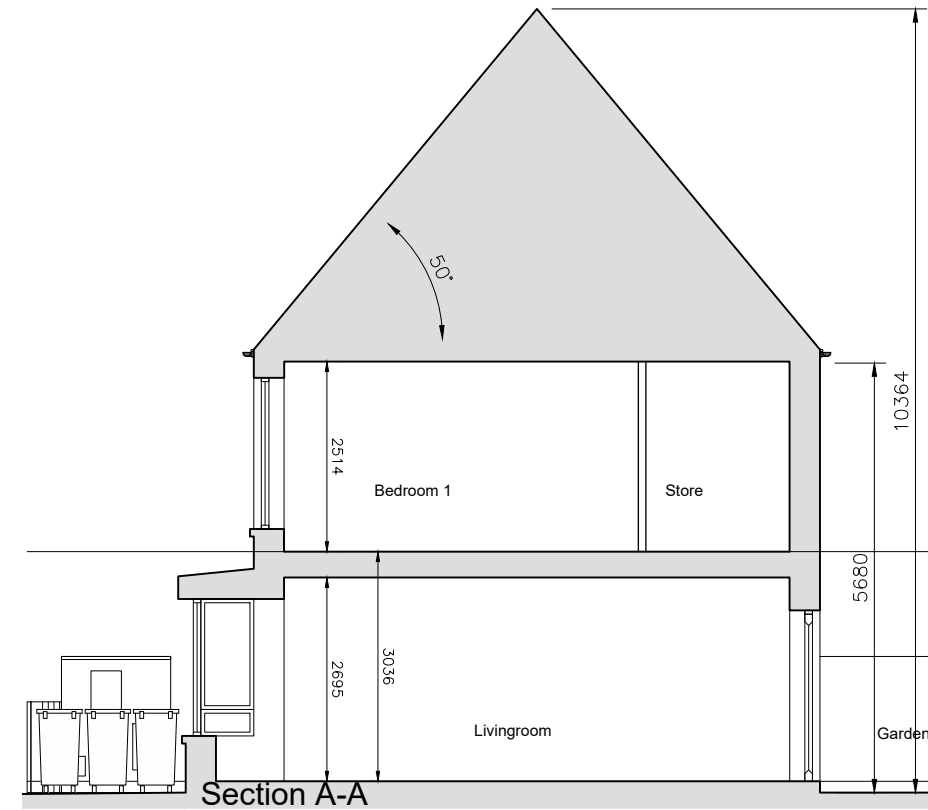




**GROUND FLOOR**  
67.7sqm  
Total Floor Area 133.9sqm



**FIRST FLOOR**  
66.2 sqm



**Section A-A**

- © This drawing is copyright.  
 1 Do not scale this drawing.  
 2 Errors and omissions to be immediately notified to Architect.  
 3 All dimensions to be checked on site.  
 4 To be read with relevant Engineers drawings.

NORTH



Refer to Site layout Plan for specific orientation of House Types.

Notes:

- All dimensions in millimetres
- Orientation varies. See site layout plan.
- This Housetype may be handed. See site layout plan.
- For proposed finished floor levels please refer to proposed site layout drawing.

External Finishes:

Roof:  
Slate or clay/concrete tiles with solar thermal or photovoltaic panels subject to orientation and detailed design

Walls:  
Painted render finish and/or Selected facing brick

Windows:  
uPVC framed

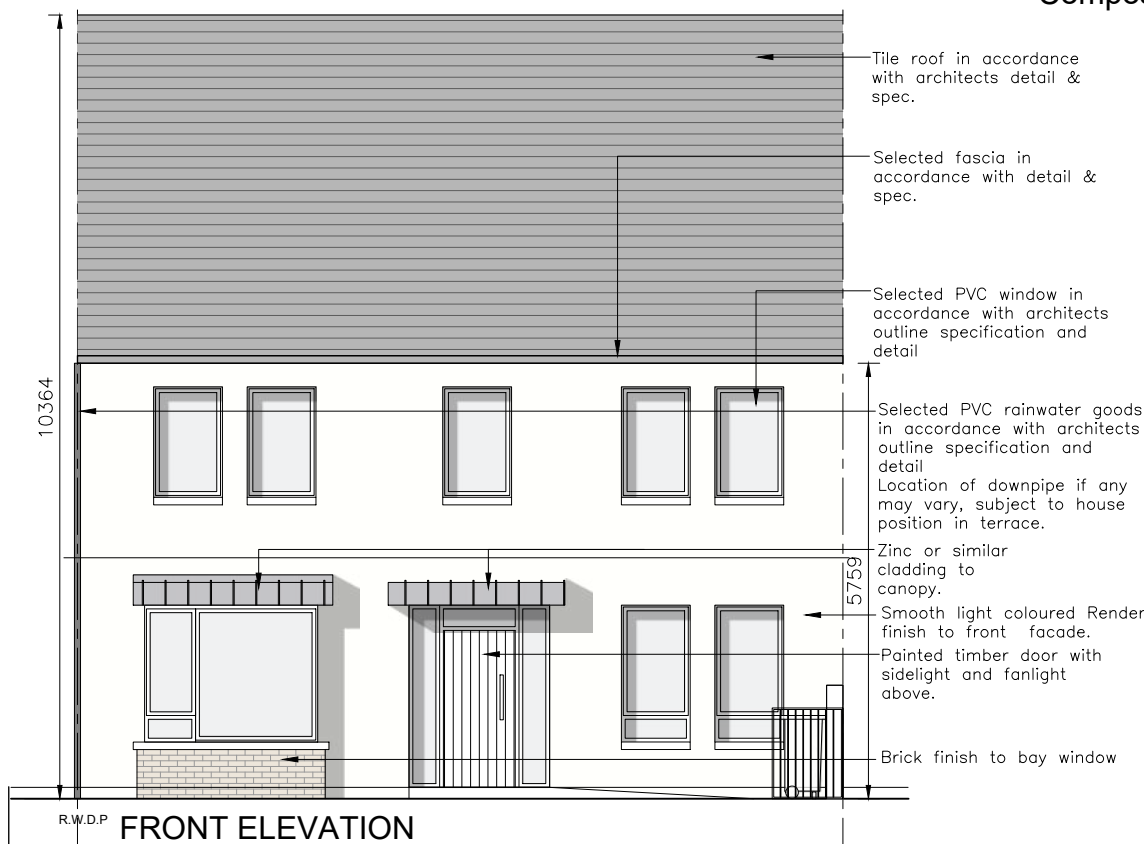
Gutters/downpipes:  
uPVC or aluminium

Front Door:  
Selected coloured composite or painted timber door with fanlight and/or sidelight.

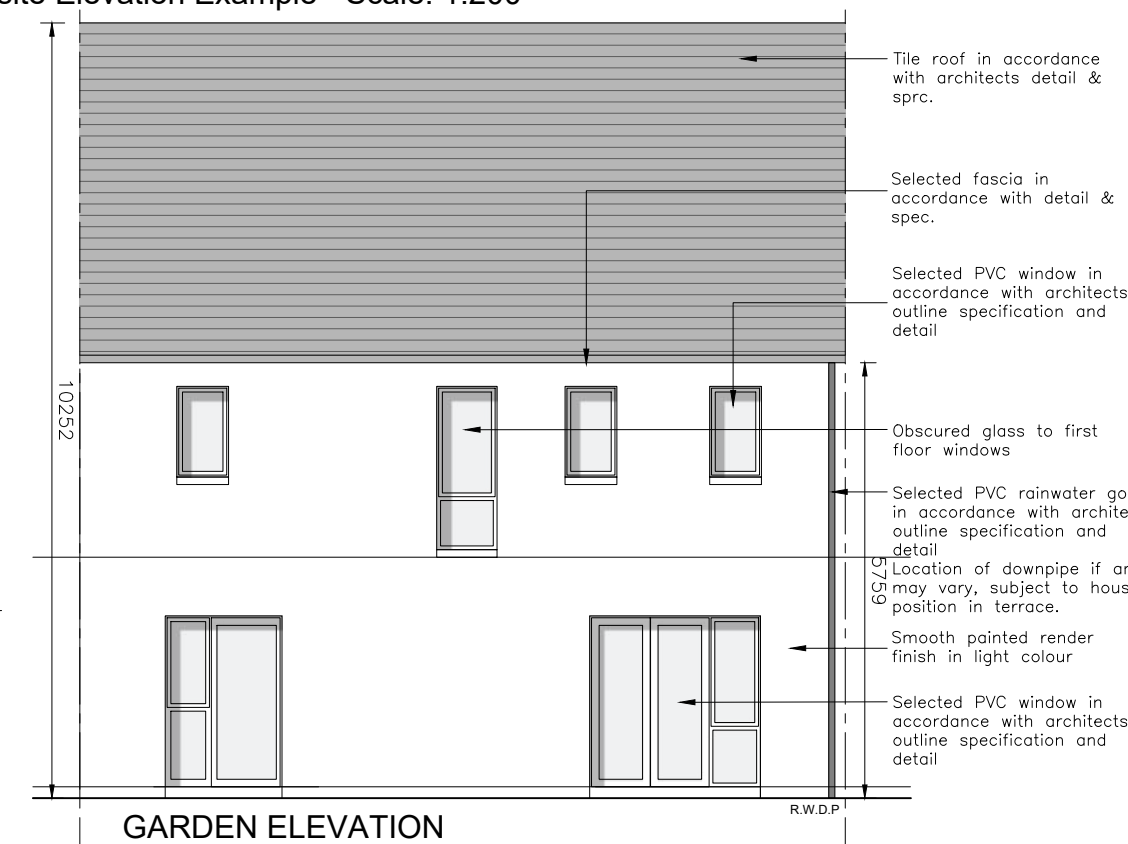
Front Door Canopy:  
Pressed or standing seam metal on Timber framing



**Composite Elevation Example - Scale: 1:200**



**FRONT ELEVATION**



**GARDEN ELEVATION**

AREA PROVIDED: (m<sup>2</sup>)

	FCC Min.
3-bed/5 person, 2 storey:	
Aggregate Living:	49.5 34
Aggregate Bedroom:	39.1 32
Storage:	7.4 5

revisions description date inls

description

House Type 6A

3 Bed Mid Terrace

drawing no. 2008 PA1 407

scale 1:100

date APR 22

drawn EK

checked

job Belcamp SHD Malahide Road Dublin 17

client Gerard Gannon Properties

issue SHD PLANNING APPLICATION

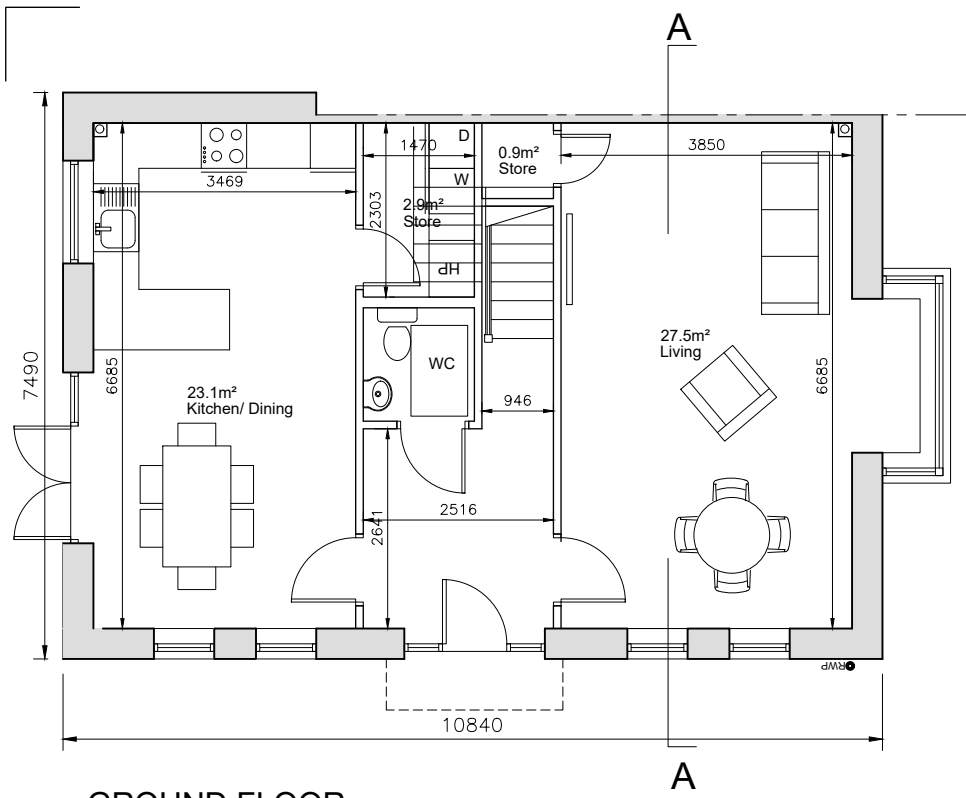
CONROY CROWE KELLY ARCHITECTS & URBAN DESIGNERS

65 MERRION SQUARE DUBLIN 2

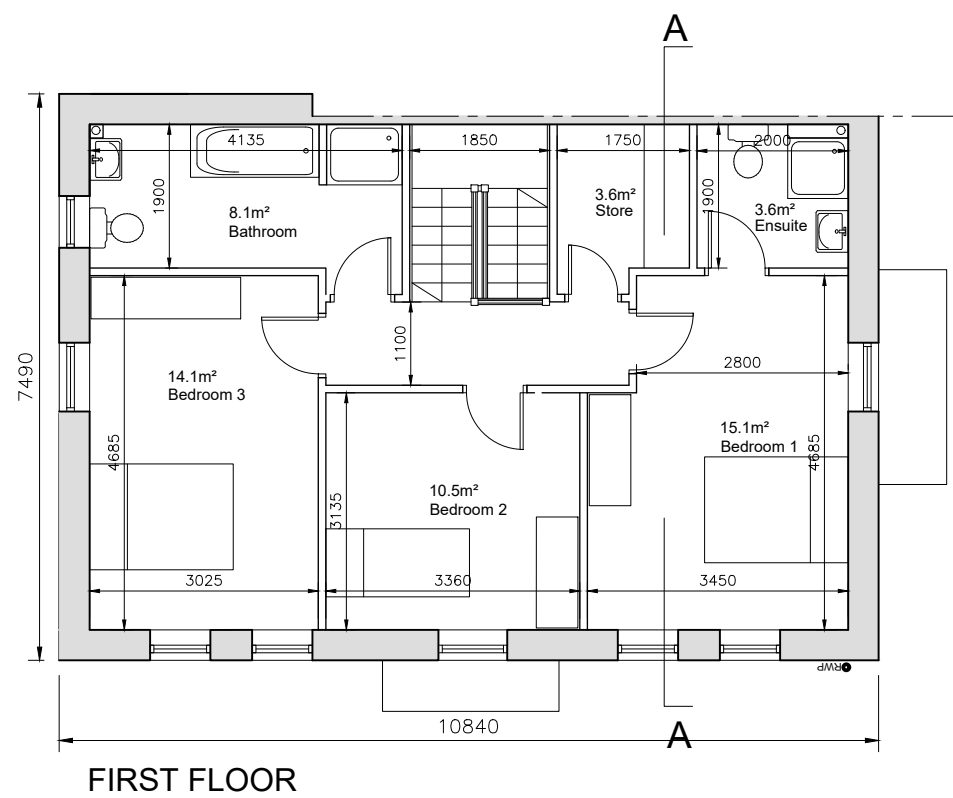
PHONE 6613990/1 FAX 6765715

e-mail info@cck.ie

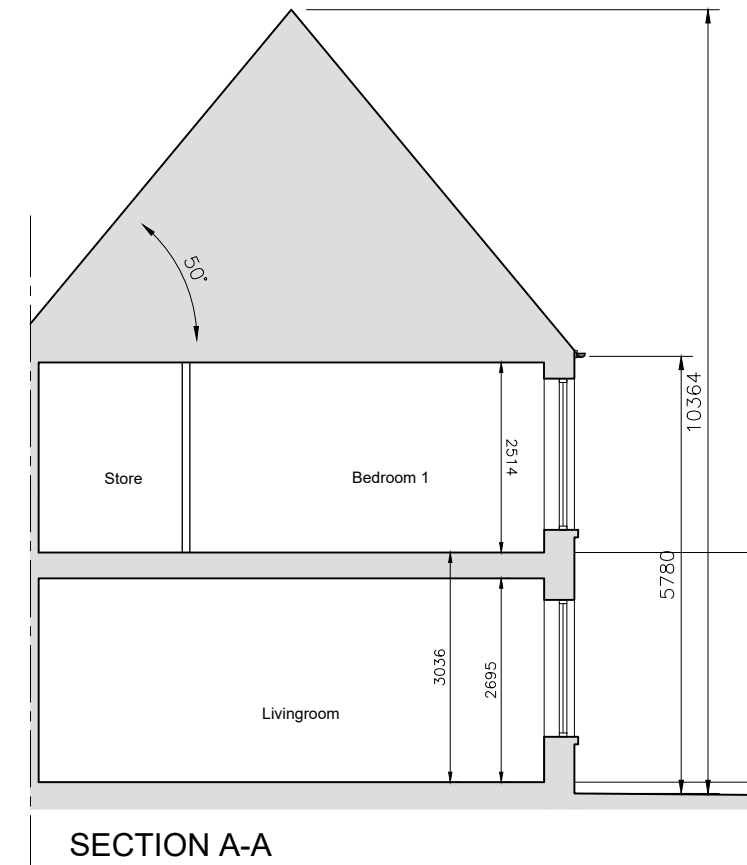




**GROUND FLOOR**  
68.9 sqm  
Total Floor Area 135.9sqm



**FIRST FLOOR**  
67.0 sqm



**SECTION A-A**

AREA PROVIDED: (m<sup>2</sup>)

3-bed/5 person, 2 storey:	FCC Min.
Aggregate Living:	50.6 34
Aggregate Bedroom:	39.7 32
Storage:	7.4 5

© This drawing is copyright.  
 1 Do not scale this drawing.  
 2 Errors and omissions to be immediately notified to Architect.  
 3 All dimensions to be checked on site.  
 4 To be read with relevant Engineers drawings.

**NORTH**

Refer to Site layout Plan for specific orientation of House Types.

**Notes:**

- All dimensions in millimetres
- Orientation varies. See site layout plan.
- This Housetype may be handed. See site layout plan.
- For proposed finished floor levels please refer to proposed site layout drawing.

**External Finishes:**  
**Roof:**  
 Slate or clay/concrete tiles with solar thermal or photovoltaic panels subject to orientation and detailed design

**Walls:**  
 Painted render finish and/or Selected facing brick

**Windows:**  
 uPVC framed

**Gutters/downpipes:**  
 uPVC or aluminium

**Front Door:**  
 Selected coloured composite or painted timber door with fanlight and/or sidelight.

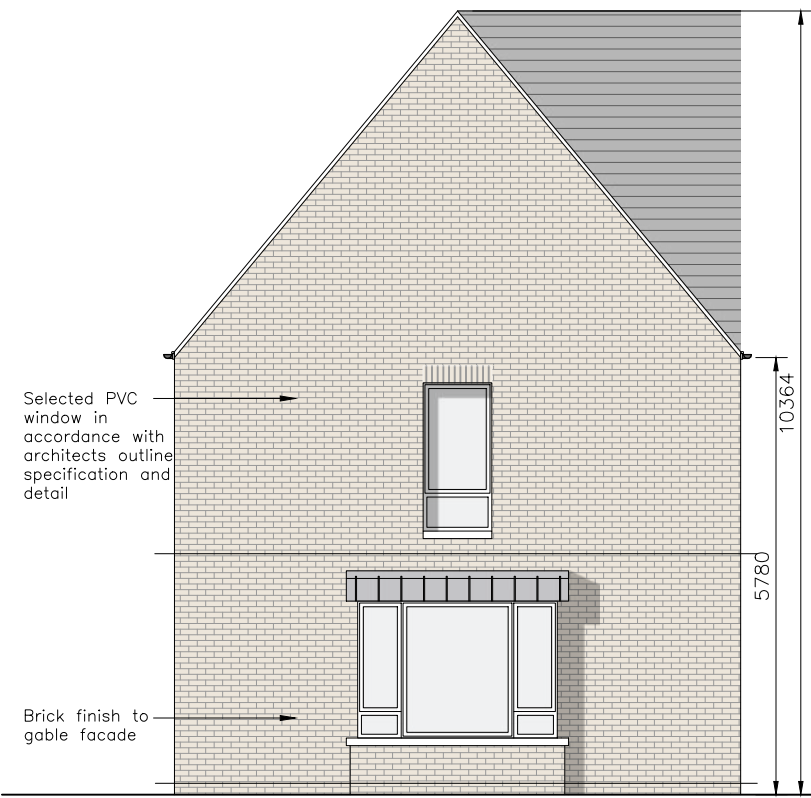
**Front Door Canopy:**  
 Pressed or standing seam metal on Timber framing



**FRONT ELEVATION**



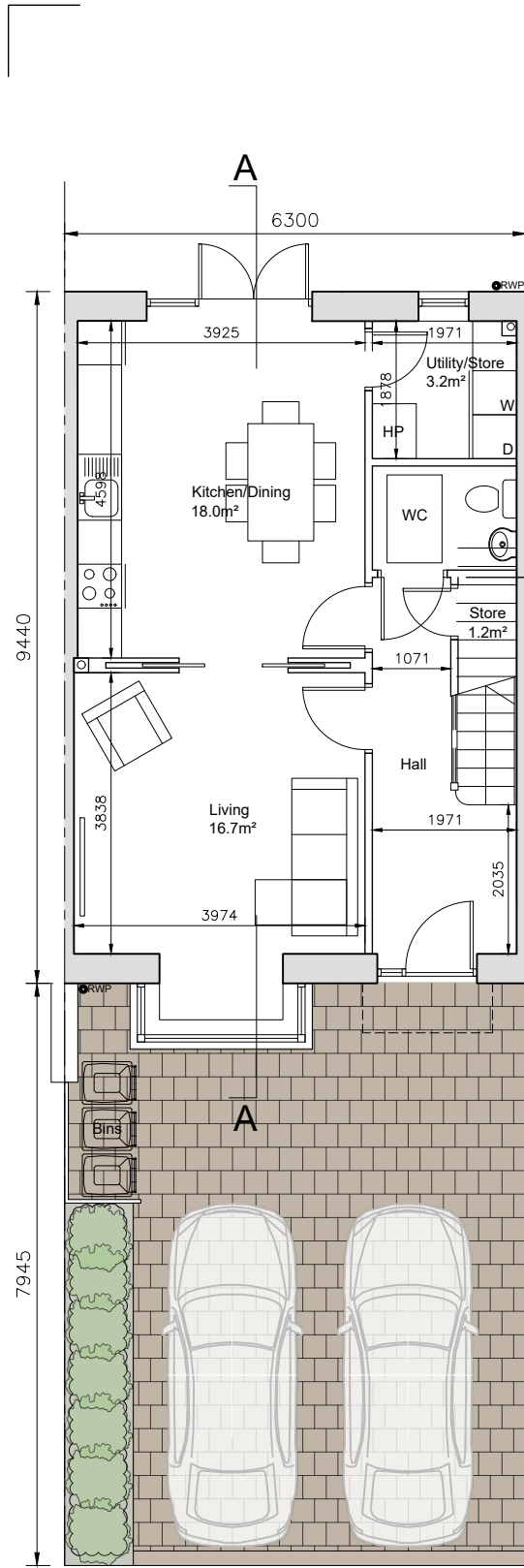
**GARDEN ELEVATION**



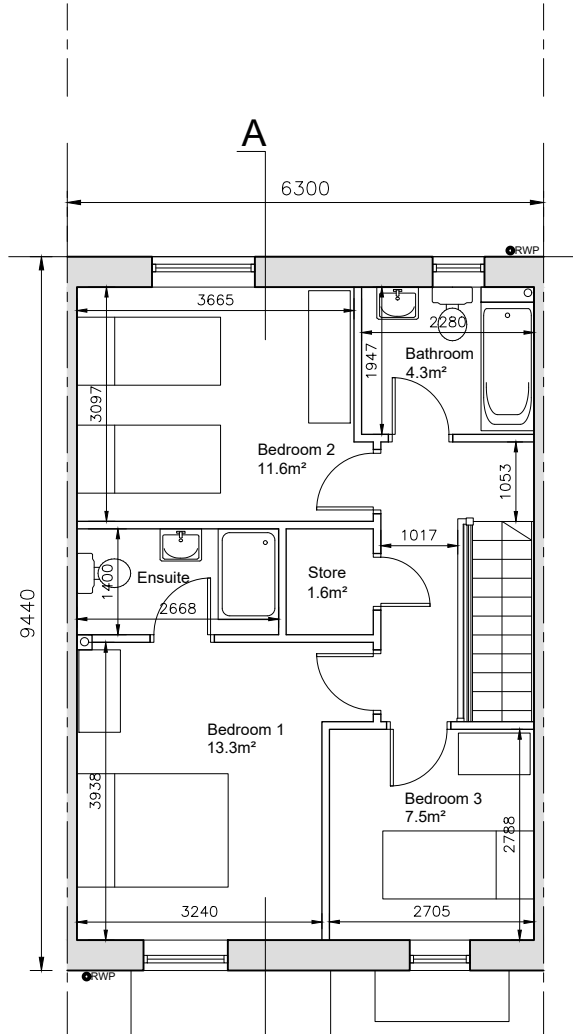
**GABLE ELEVATION**

revisions	date	inls
description		
House Type 6B		
3 Bed End Terrace		
job	scale	1:100
Belcamp SHD	date	APR' 22
Malahide Road	drawn	EK
Dublin 17	checked	
client	Gerard Gannon Properties	
issue	SHD PLANNING APPLICATION	
<b>CONROY CROWE KELLY</b> ARCHITECTS & URBAN DESIGNERS 65 MERRION SQUARE DUBLIN 2 PHONE 6613990/1 FAX 6765715 e-mail info@cck.ie		

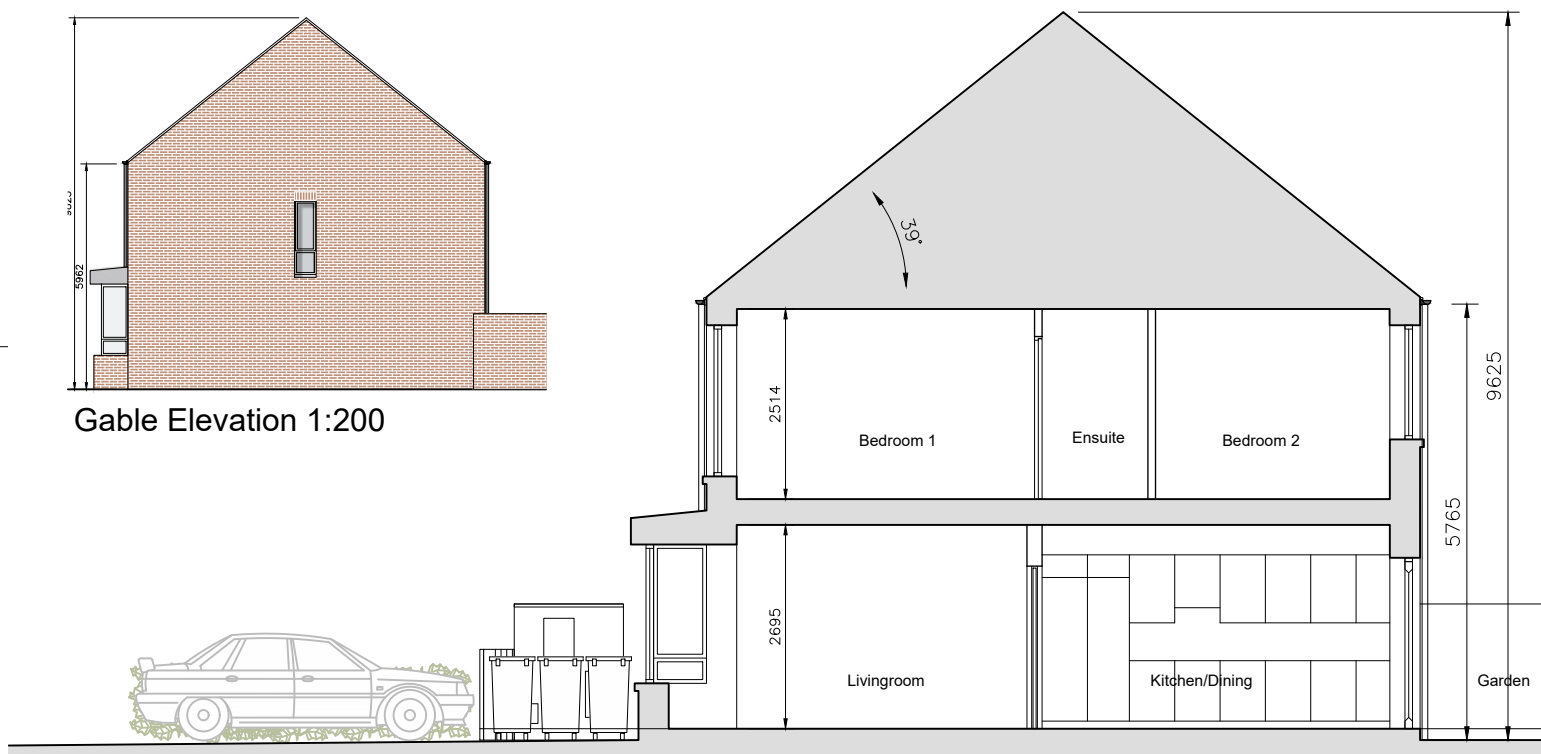




**GROUND FLOOR**  
53.4sqm  
Total Floor Area 105.5sqm



**FIRST FLOOR**  
52.1 sqm

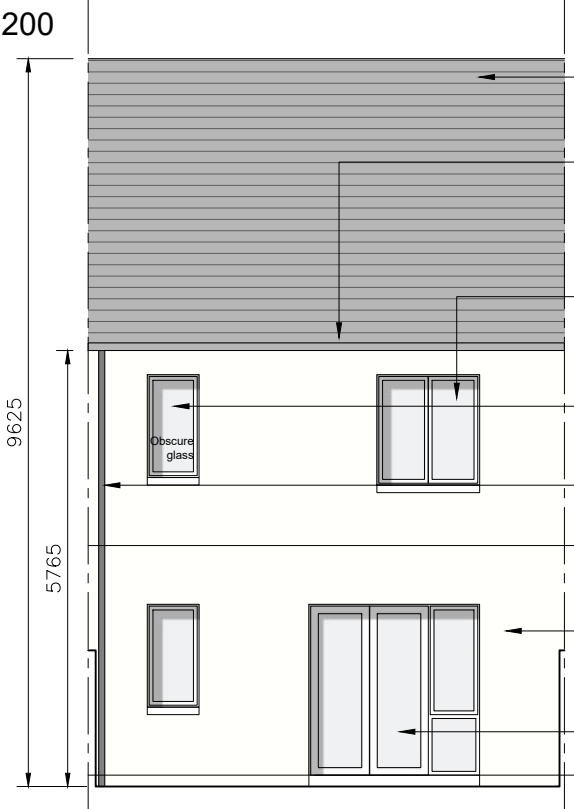


Composite Elevation Example - Scale: 1:200



**FRONT ELEVATION**

- Tile roof in accordance with architects detail & spec.
- Selected fascia in accordance with detail & spec.
- Selected PVC window in accordance with architects outline specification and detail
- Selected PVC rainwater goods in accordance with architects outline specification and detail  
Location of downpipe if any may vary, subject to house position in terrace.
- Zinc or similar cladding to canopy.
- Brick finish to front facade.
- Painted timber door with sidelight and fanlight above.
- Smooth painted render in light colour and concrete capping to gossip wall, with painted steel railings to bin store.



**GARDEN ELEVATION**

- Tile roof in accordance with architects detail & spec.
- Selected fascia in accordance with detail & spec.
- Selected PVC window in accordance with architects outline specification and detail
- Obscured renders to windows
- Selected PVC rainwater goods in accordance with architects outline specification and detail  
Location of downpipe if any may vary, subject to house position in terrace.
- Rendered wall in accordance with architects outline specification and detail
- Selected PVC door in accordance with architects outline specification and detail

**AREA PROVIDED: (m<sup>2</sup>)**

	3-bed/5 person, 2 storey:	FCC Min.
Aggregate Living:	34.7	34
Aggregate Bedroom:	32.5	32
Storage:	5.8	5

- © This drawing is copyright.
- Do not scale this drawing.
  - Errors and omissions to be immediately notified to Architect.
  - All dimensions to be checked on site.
  - To be read with relevant Engineers drawings.



Refer to Site layout Plan for specific orientation of House Types.

- Notes:**
- All dimensions in millimetres
  - Orientation varies. See site layout plan.
  - This Housetype may be handed. See site layout plan.
  - For proposed finished floor levels please refer to proposed site layout drawing.

**External Finishes:**  
Roof: Slate or clay/concrete tiles with solar thermal or photovoltaic panels subject to orientation and detailed design

**Walls:**  
Painted render finish and/or Selected facing brick

**Windows:**  
uPVC framed

**Gutters/downpipes:**  
uPVC or aluminium

**Front Door:**  
Selected coloured composite or painted timber door with fanlight and/or sidelight.

**Front Door Canopy:**  
Pressed or standing seam metal on Timber framing

revisions	date	inls
description		
House Type 7		
3 Bed Mid / End Terrace		
drawing no.	2008 PA1 409	
scale	1:100	
date	APR' 22	
drawn	EK	
checked		

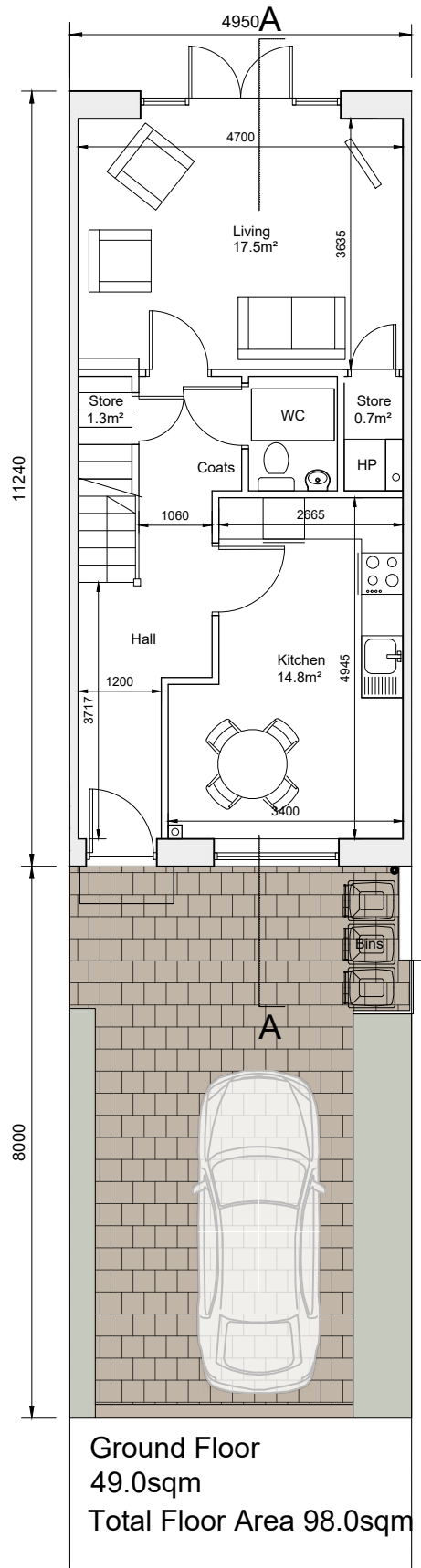
**client**  
Gerard Gannon Properties

**issue**  
SHD PLANNING APPLICATION

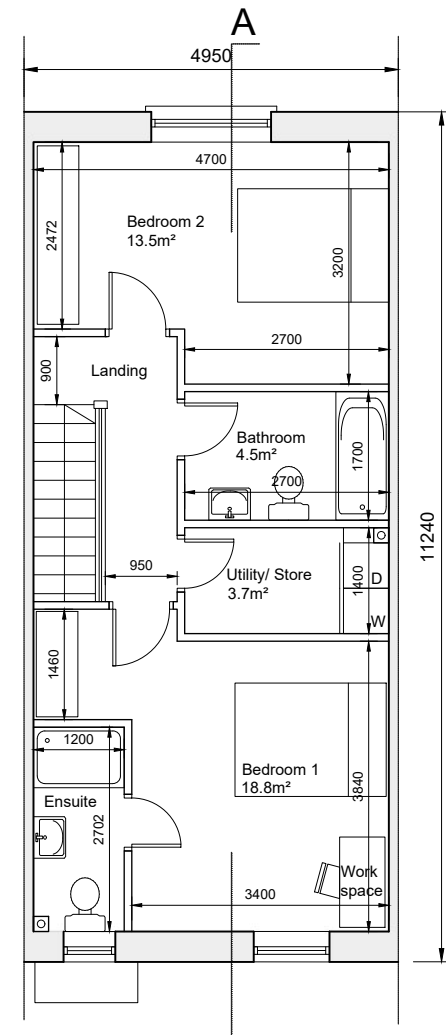
**CONROY CROWE KELLY**  
ARCHITECTS & URBAN DESIGNERS  
65 MERRION SQUARE  
DUBLIN 2

PHONE 6613990/1 FAX 6765715  
e-mail info@cck.ie

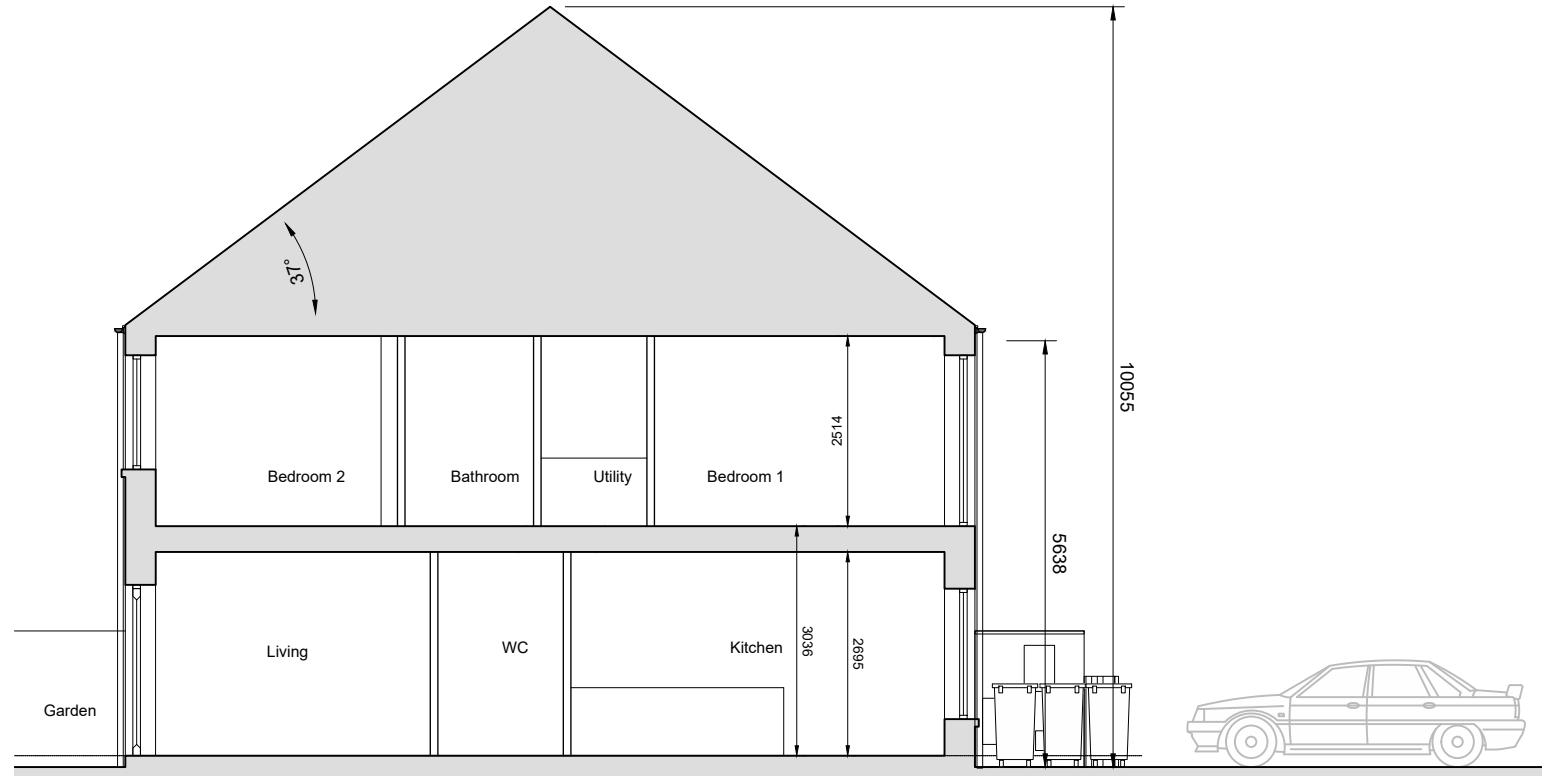




Ground Floor  
49.0sqm  
Total Floor Area 98.0sqm



First Floor  
49.0sqm



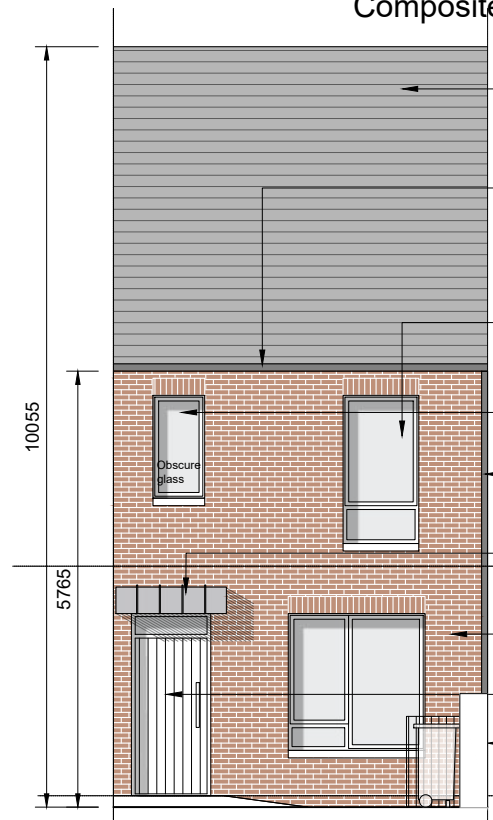
SECTION A-A



Composite Elevation Example - Scale: 1:200

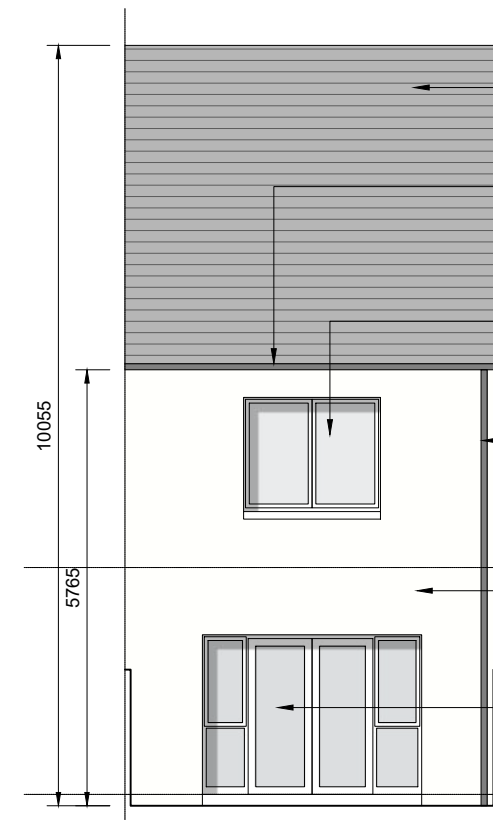
AREA PROVIDED: (m<sup>2</sup>)

2-bed/4 person, 2 storey:	FCC Min.
Aggregate Living:	32.3 30
Aggregate Bedroom:	32.3 25
Storage:	5.7 4.5



FRONT ELEVATION

- Tile roof in accordance with architects detail & sprc.
- Selected fascia in accordance with detail & spec.
- Selected PVC window in accordance with architects outline specification and detail
- Obscured renders to WC windows
- Selected PVC rainwater goods in accordance with architects outline specification and detail
- Location of downpipe if any may vary, subject to house position in terrace.
- Zinc or similar cladding to canopy.
- Brick finish to front facade. Render finish to front facade of House no's: 96, 98, 155, 157, 382, 383.
- Painted timber door with fanlight above.
- Smooth painted render in light colour and concrete capping to gossip wall, with painted steel railings to bin store.



GARDEN ELEVATION

- Tile roof in accordance with architects detail & sprc.
- Selected fascia in accordance with detail & spec.
- Selected PVC window in accordance with architects outline specification and detail
- Black PVC rainwater goods. Location of downpipe, if any, may vary subject to house position in terrace.
- Rendered wall in accordance with architects outline specification and detail
- Selected PVC door in accordance with architects outline specification and detail

- This drawing is copyright.
- Do not scale this drawing.
- Errors and omissions to be immediately notified to Architect.
- All dimensions to be checked on site.
- To be read with relevant Engineers drawings.



Refer to Site layout Plan for specific orientation of House Types.

- Notes:
- All dimensions in millimetres
  - Orientation varies. See site layout plan.
  - This Housetype may be handed. See site layout plan.
  - For proposed finished floor levels please refer to proposed site layout drawing.

External Finishes:  
Roof:  
Slate or clay/concrete tiles with solar thermal or photovoltaic panels subject to orientation and detailed design

Walls:  
Painted render finish and/or Selected facing brick

Windows:  
uPVC framed

Gutters/downpipes:  
uPVC or aluminium

Front Door:  
Selected coloured composite or painted timber door with fanlight and/or sidelight.

Front Door Canopy:  
Pressed or standing seam metal on Timber framing

revisions	date	inls
description		
House Type 8		
2 Bed Mid / End Terrace		
drawing no.	2008 PA1 410	date
scale	1:100	date
job	SHD DEVELOPMENT, BELCAMP, MALAHIDE ROAD, DUBLIN 17.	
client	Gerard Gannon Properties	
issue	SHD PLANNING APPLICATION	
<b>CONROY CROWE KELLY</b> ARCHITECTS & URBAN DESIGNERS 65 MERRION SQUARE DUBLIN 2 PHONE 6613990/1 FAX 6765715 e-mail info@cck.ie		